

# **Dell PowerConnect W-Series**

## **Instant Access Point**

### **6.2.0.0-3.2.0.0**

# **MIB Reference Guide**



## Copyright

© 2013 Aruba Networks, Inc. Aruba Networks trademarks include  airwave, Aruba Networks®, Aruba Wireless Networks®, the registered Aruba the Mobile Edge Company logo, and Aruba Mobility Management System®. Dell™, the DELL™ logo, and PowerConnect™ are trademarks of Dell Inc.

All rights reserved. Specifications in this manual are subject to change without notice.

Originated in the USA. All other trademarks are the property of their respective owners.

## Open Source Code

Certain Aruba products include Open Source software code developed by third parties, including software code subject to the GNU General Public License (GPL), GNU Lesser General Public License (LGPL), or other Open Source Licenses. Includes software from Litech Systems Design. The IF-MAP client library copyright 2011

Infoblox, Inc. All rights reserved. This product includes software developed by Lars Fenneberg, et al. The Open Source code used can be found at this site:

[http://www.arubanetworks.com/open\\_source](http://www.arubanetworks.com/open_source)

## Legal Notice

The use of Aruba Networks, Inc. switching platforms and software, by all individuals or corporations, to terminate other vendors' VPN client devices constitutes complete acceptance of liability by that individual or corporation for this action and indemnifies, in full, Aruba Networks, Inc. from any and all legal actions that might be taken against it with respect to infringement of copyright on behalf of those vendors.

# Contents

Preface.....	5	
An Overview of This Manual .....	5	
Contents .....	5	
Related Documents .....	5	
Frequently Used Acronyms.....	5	
Contacting Support .....	8	
Chapter 1	MIBs Overview .....	9
	MIBs .....	9
	SNMP .....	10
Chapter 2	Using MIBs .....	13
	Downloading MIB Files .....	13
	Monitoring WLAN Health.....	13
	Reading MIB Files .....	14
	SNMP File .....	17
	HP OpenView .....	17
Chapter 3	Dell W-Instant MIB .....	19
	aiAccessPointTable .....	20
	aiRadioTable.....	23
	aiWlanTable .....	28
	aiClientTable.....	31
Chapter 4	SNMP MIBs Reference.....	35
Chapter 5	Traps.....	39
	Trap Hierarchy .....	39
	ai Traps Objects Group.....	40
	ai Traps Definitions Group .....	63
Index.....	99	



## An Overview of This Manual

This manual is for network administrators and operators responsible for managing the Dell PowerConnect W-Series Instant Access Point.

## Contents

This guide provides information about MIBs. Unless otherwise stated in the following table, each chapter provides information about the hierarchy, OIDs, and descriptions of the statistical information the MIBs provide.

Chapter	Contents
<a href="#">MIBs Overview</a>	Introductory information about Dell PowerConnect W-Instant MIBs.
<a href="#">Using MIBs</a>	Information and tips about Dell PowerConnect W-Instant MIB files.
<a href="#">Dell W-Instant MIB</a>	Information about the supported Dell PowerConnect W-Instant MIB tables.
<a href="#">SNMP MIBs Reference</a>	Reference—list of SNMP MIBs and associated OIDs.

## Related Documents

The complete documentation set for Dell PowerConnect W-Series Instant Access Point 6.2.0.0-3.2.0.0 software release are:

- *Dell PowerConnect W-Series Instant Access Point 6.2.0.0-3.2.0.0 MIB Reference Guide*
- *Dell PowerConnect W-Series Instant Access Point 6.2.0.0-3.2.0.0 Quick Start Guide*
- *Dell PowerConnect W-Series Instant Access Point 6.2.0.0-3.2.0.0 User Guide*
- *Dell PowerConnect W-Series Instant Access Point 6.2.0.0-3.2.0.0 Release Notes*

## Frequently Used Acronyms

[Table 1](#) defines frequently used acronyms.

**Table 1** *Acronyms*

Acronym	Definition
3DES	Triple DES
ACL	Access Control List
AM	Air Monitor
AP	Access Point
ARM	Adaptive Radio Management
BSSID	Basic Service Set Identifier

**Table 1** *Acronyms (Continued)*

<b>Acronym</b>	<b>Definition</b>
CA	Certificate Authority
CAC	Call Admission Control
CHAP	Challenge Handshake Authentication Protocol
CLI	Command Line Interface
CRL	Certificate Revocation List
CSA	Channel Switch Announcement
CSR	Certificate Signing Request
CW	Contention Window
DA	Destination Address
DES	Data Encryption Standard
DHCP	Dynamic Host Configuration Protocol
DNS	Domain Name Service
DOS	Denial of Service
DPD	Dead Peer Detection
DSS	Direct Spread Spectrum
EAP	Extensible Authentication Protocol
EDCA	Enhanced Distributed Channel Access
EIRP	Effective Isotropic Radiated Power
ESI	External Services Interface
ESSID	Extended Service Set Identifier
GRE	Generic Routing Encapsulation
GUI	Graphical User Interface
HAT	Home Agent Table
HT	High Throughput
IAS	Internet Authentication Service
IDS	Intrusion Detection System
IGMP	Internet Group Management Protocol
IKE	Internet Key Exchange
IP	Internet Protocol
IV	Initialization Vectors
kB	Kilobyte
LAN	Local Area Network
LDAP	Lightweight Directory Access Protocol
LI	Listening Interval

**Table 1** *Acronyms (Continued)*

<b>Acronym</b>	<b>Definition</b>
MAC	Media Access Control
MB	Megabyte
MCHAP	Microsoft Challenge Handshake Authentication Protocol
MIB	Management Information Base
NAS	Network Address Server
NAT	Network Address Translation
NIC	Network Interface Card
NTP	Network Time Protocol
OFDM	Orthogonal Frequency Division Multiplexing
OID	Object Identifier
OUI	Organizational Unit Identifier
PAP	Password Authentication Protocol
PEAP	Protected EAP
PEF	Policy Enforcement Firewall
PIN	Personal Identification Number
PoE	Power over Ethernet
PPTP	Point-to-Point Tunneling Protocol
PSK	Pre-Shared Key
QoS	Quality of Service
RADIUS	Remote Authentication Dial In User Service
RAP	Remote Access Point
RF	Radio Frequency
RMON	Remote Monitor
RSA	Rivest-Shamir-Aldeman (encryption algorithm)
SIP	Session Initiation Protocol
SNMP	Simple Network Management Protocol
SSH	Secure Shell
SSID	Service Set Identifier
TIM	Traffic Indication Map
TLS	Transport Layer Security
ToS	Type of Service
TSPEC	Traffic Specification
VLAN	Virtual Local Area Network
VoIP	Voice over IP

**Table 1** *Acronyms (Continued)*

<b>Acronym</b>	<b>Definition</b>
VPN	Virtual Private Network
VRRP	Virtual Router Redundancy Protocol
VSA	Vendor Specific Attributes
WEP	Wired Equivalent Protocol
WINS	Windows Internet Naming Service
WLAN	Wireless Local Area Network
WMM	Wireless MultiMedia / Wi-Fi Multimedia
WMS	WLAN Management System
WPA	Wi-Fi Protected Access

## Contacting Support

<b>Website Support</b>	
Main Website	<a href="http://dell.com">dell.com</a>
Support Website	<a href="http://dell.com/support">dell.com/support</a>
Dell Documentation	<a href="http://dell.com/support/manuals">dell.com/support/manuals</a>



This chapter provides an overview of the Dell W-Instant Enterprise MIBs in the following sections:

- [MIBs](#)
- [SNMP](#)

### MIBs

A Management Information Base (MIB) is a virtual database that contains information that is used for network management. Each managed device contains MIBs that define the properties of that device. A separate MIB is provided for each defined property, such as the group of physical ports that are assigned to a VLAN or the statistical data of packets that are transferred at a specific rate.

MIB objects, such as a MIB table or a specific element of data in a MIB table, are identified with Object Identifiers (OIDs). The OIDs are designated by text strings and integer sequences.

The hardware MIBs are assigned under the Dell organization code. For example, *Dell* and *1.3.6.1.4.1.14823* both represent the private enterprise node *Aruba*, as shown in [Figure 1 on page 10](#).

*Dell* is the parent of the proprietary MIBs that are supported on Dell PowerConnect W-Series Mobility Controllers.

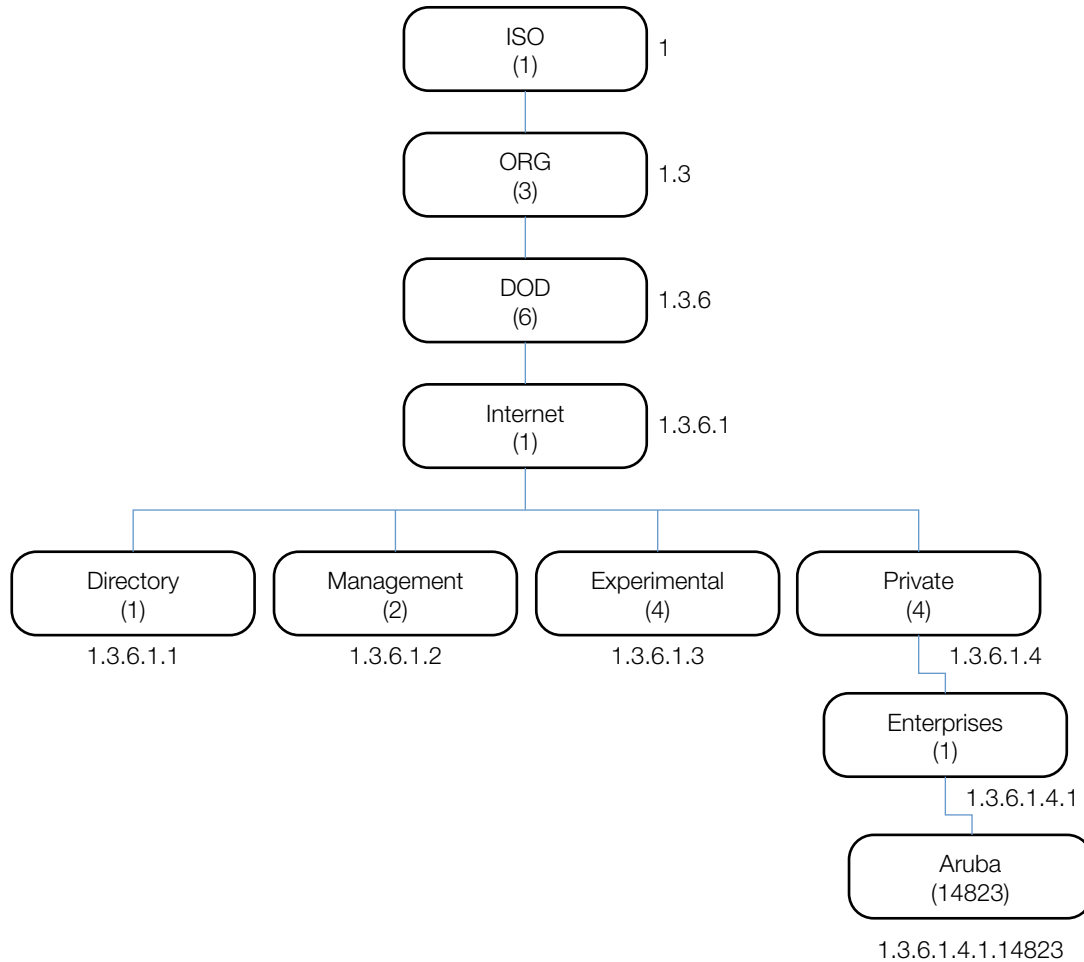
The numerical string lists the nodes of the enterprise MIB hierarchy, as shown in [Table 2](#).

**Table 2** MIB Node Identification - Enterprise Nodes

Integer	String	Name
1	1	OSI
3	1.3	ORG
6	1.3.6	DOD
1	1.3.6.1	Internet
4	1.3.6.1.4	Private
1	1.3.6.1.4.1	Enterprise
674	1.3.6.1.4.1.674	Dell

Figure 1 illustrates the high-level hierarchy of the MIBs. This document only covers the enterprise MIBs, objects designed to specifically support Dell devices. Standard MIBs are not covered.

**Figure 1** High-Level MIB Hierarchy



MIB is one of the elements of Simple Network Management Protocol (SNMP), which is used to manage network devices. To deliver information between devices, every object referred to in an SNMP message must be listed in the MIB. If a component of a device is not described in a MIB, that component cannot be recognized by SNMP—there is no information for SNMP managers and SNMP agents to exchange.

The information provided by a MIB is a file that describes network elements with numerical strings. This information is compiled into readable text by the SNMP manager. For information about reading MIB text files, see [“Reading MIB Files” on page 14](#).

## SNMP

Three significant elements of SNMP are Managers, Agents, and MIBs.

- Managers (software application) are consoles that are used to communicate with and manage devices that support SNMP Agents. Managers collect information by polling Agents. Managers can also be used to send configuration updates or send controlling requests to actively manage a network device.
- Agents (software application) provide information from the network devices to the Managers. Network devices include workstations, routers, microwave radios, and other network components.

- MIBs are used for communication between the Managers and the Agents. The OIDs of the MIBs enable the Managers and Agents to communicate specific data requests and data returns.
- To ensure functionality with SNMP, MIB objects must be defined with the proper *keywords*, as shown in [Table 3](#).

Dell W-Instant Enterprise MIBs support SNMPv1, SNMPv2, and SNMPv3.

**Table 3** *MIB Keywords*

<b>Keyword</b>	<b>Description</b>
Sequence	The sequence of objects of the MIB. This keyword is used mostly with entry MIB objects to list the MIB objects that exchange information.
Syntax	Textual conventions, such as <i>Integer32</i> .
Max-Access	Defines the object accessibility: <i>read-only</i> : can be retrieved but not modified <i>read-write</i> : can be retrieved and modified <i>not-accessible</i> : cannot be retrieved; it is for internal (device) use only <i>accessible-for-notify</i> : can be retrieved when a trap message (notification) is sent
Status	Defines the status of the object: <i>current</i> : up to date and valid. <i>deprecated</i> : indicates an obsolete definition. It permits new or continued implementation to maintain interoperability with existing implementations. <i>obsolete</i> : obsolete. It should not be implemented and/or can be removed if previously implemented.
Description	A text string that describes the object.



This chapter provides information on and examples of using MIBs.

- [Downloading MIB Files](#)
- [Monitoring WLAN Health](#)
- [Reading MIB Files](#)
- [SNMP File](#)
- [HP OpenView](#)

### Downloading MIB Files

The most recent Dell MIB files are available for registered customers at: [dell.com/support](http://dell.com/support).

For assistance to set up an account and access files, please contact customer service. See “[Contacting Support](#)” on page 8.

### Monitoring WLAN Health

This section lists SNMP MIBs that are frequently used to run health checks on Dell W-Instant devices, which can be performed through a MIB browser application. To retrieve information from a MIB, the following information is required:

- SNMP version
- SNMP community name—*public* or *private*
- The IP Address of the Dell PowerConnect W-Series Mobility Controller
- The OID of the MIB value you want to monitor

In addition, MIB files can be placed in the appropriate disk location to assist the user in locating desired OID values for monitoring. If MIB files need to be acquired, see [Downloading MIB Files](#).

It is assumed that the workstation is connected to the Dell W-Instant and that a MIB browser is available. For most applications, the *root* of the MIB must be included in the OID—the OID begins with a decimal point as shown below.

```
.1.3.6.1.4.1.674.2.2.1.1.2.1
```

### MIB Browsers

If using an application that is run through CLI (a *cmd* window), the command would resemble the following:

```
snmpget -v 2c -c <community name> <Instant IP address><MIB OID>
```

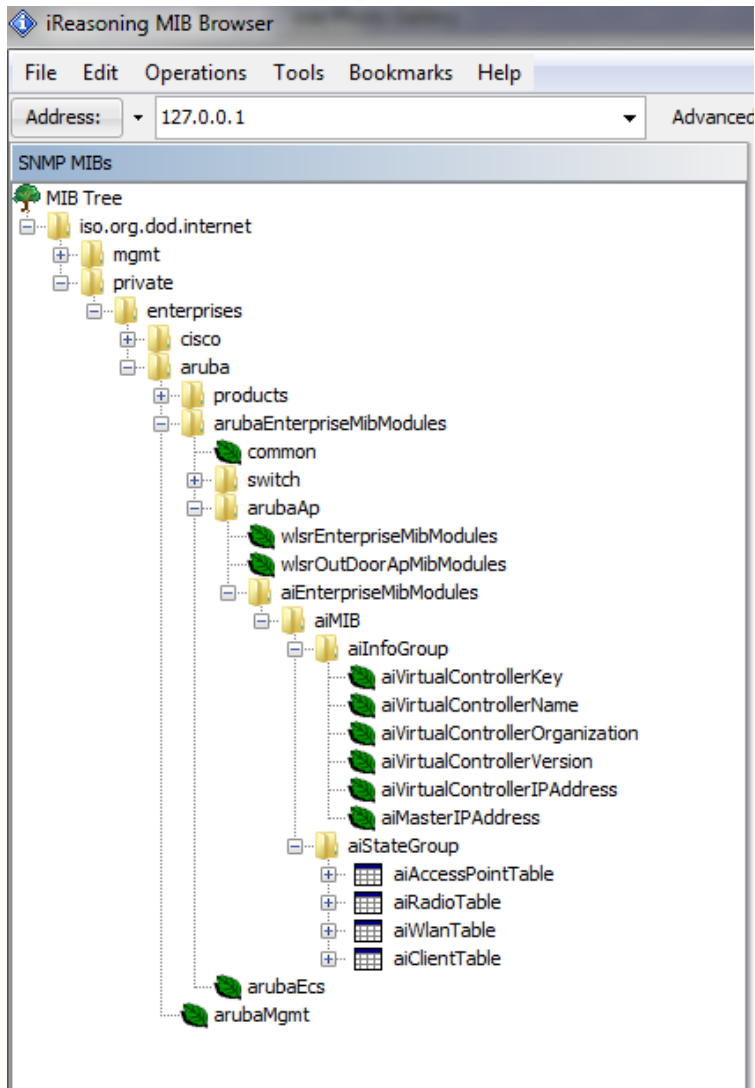
[Figure 2](#) shows an example of submitting a command to obtain information.

#### Figure 2 CLI Interface

```
[root@localhost ~]# snmpget -v 2c -c public 10.65.77.8 .1.3.6.1.4.1.14823.2.3.3.1.1.2.0
SNMPv2-SMI::enterprises.14823.2.3.3.1.1.2.0 = STRING: "Instant-CB:A5:52"
```

Figure 3 shows how information may be obtained through a graphical user interface (GUI). The user interface and the available features vary by application.

**Figure 3** Graphical User Interface



## Reading MIB Files

This section describes how to interpret the basic components of a MIB file. To determine the OIDs, viewing the file `snmp.h` may be necessary, which is described in “SNMP File” on page 17. For additional information about MIB files, see “MIBs” on page 9. For a listing of SNMP MIB OIDs, see Chapter 4, “SNMP MIBs Reference” on page 35.

MIB files describe a specific component of a network device. The files are numerical strings that are converted to ASCII text by the compiler of the SNMP manager. A word processor or text editor can be used to open the ASCII file. The contents of an example Instant enterprise MIB file, `aruba-cts.my`, are described below.

### Opening Line

Following is the opening line, the beginning of the MIB file.

```
AI-AP-MIB DEFINITIONS ::= BEGIN
```

## Imports

The `Imports` section lists the objects that are defined in external ASN.1 files and are used in the current MIB file.

```
IMPORTS
    TEXTUAL-CONVENTION
        FROM SNMPv2-TC

    MODULE-IDENTITY,
    OBJECT-TYPE,
    snmpModules,
    Integer32,
    Counter32,
    Counter64,
    IpAddress,
    NOTIFICATION-TYPE
        FROM SNMPv2-SMI

    DisplayString,
    PhysAddress,
    TimeInterval,
    RowStatus,
    StorageType,
    TestAndIncr,
    MacAddress,
    TruthValue
    FROM SNMPv2-TC

    OBJECT-GROUP
        FROM SNMPv2-CONF
        aiEnterpriseMibModules
            FROM ARUBA-MIB;
```

## Inheritance

This section shows the vendor of the MIB and the inheritance, and provides an overall description.

A significant part of inheritance is the OID. The entire OID is not listed for each MIB object—instead, the parent of the object is shown. The OID can be determined from the parent object as follows.

`aiEnterpriseMibModules` is the parent object—its OID is 1.3.6.1.4.1.14823.2.3.3.

`aiStateGroup` **OBJECT IDENTIFIER ::= { aiMIB 2 }**, the OID is 1.3.6.1.4.1.14823.2.3.3.1.2.

`aiVirtualControllerKey` **OBJECT-TYPE**, the OID is 1.3.6.1.4.1.14823.2.3.3.1.1.0.

All MIBs and their related OIDs are listed in the `snmp` file of ArubaOS. For more information, see [“SNMP File” on page 17](#).

```
aiEnterpriseMibModules
FROM ARUBA-MIB;
```

## Identity

Identity is the opening description of the MIB. The information includes contact information for the vendor and a general description of the MIB.

```
aiMIB MODULE-IDENTITY
    LAST-UPDATED "0804160206Z"
        ORGANIZATION "Aruba Wireless Networks"
        CONTACT-INFO
            "Postal:    1322 Crossman Avenue
              Sunnyvale, CA 94089
            E-mail:    dl-support@arubanetworks.com
            Phone:    +1 408 227 4500"
        DESCRIPTION
            "This MIB is for managing Aruba Instant WLAN"
        REVISION      "0804160206Z"
        DESCRIPTION
            "The initial revision."
        ::= { aiEnterpriseMibModules 1 }
```

## MIB Modules

MIB objects can be placed in logical groups, [Group](#) and [Table](#). One MIB file can consist of multiple groups. A group typically contains at least one table. The table lists the MIB objects that contain the information that is exchanged.

The first object of a table is an [Entry](#). The keyword SEQUENCE lists the objects of the table that contain device information. Each subsequent object (Informative MIB Object) inherits the OID of the Entry, and contains information sorted by keywords: Syntax, Access, Status, Description. For details about keywords, see [“MIBs” on page 9](#).

The OID of the Entry is aiAccessPointEntry is aiAccessPointTable 1, which represents 1.3.6.1.4.1.14823.2.3.3.1.2.1.1. The OIDs of the subsequent objects of this table are appended increments of the Entry OID.

## Group

```
aiStateGroup          OBJECT IDENTIFIER ::= { aiMIB 2 }
```

## Table

```
aiAccessPointTable OBJECT-TYPE
    SYNTAX      SEQUENCE OF AiAccessPointEntry
    MAX-ACCESS  not-accessible
    STATUS      current
    DESCRIPTION
        "This contains all access points connected to the
        virtual controller. This table is empty on AP where
        virtual controller is not active"
    ::= { aiStateGroup 1 }
```



## Entry

```
aiAccessPointEntry OBJECT-TYPE
    SYNTAX      AiAccessPointEntry
    MAX-ACCESS  not-accessible
    STATUS      current
    DESCRIPTION
        " "
        INDEX { aiAPMACAddress }
    ::= { aiAccessPointTable 1 } AiAccessPointEntry ::=
SEQUENCE {
    aiAPMACAddress      MacAddress,
    aiAPName            DisplayString,
    aiAPIPAddress       IPAddress,
    aiAPSerialNum       DisplayString,
    aiAPModel           OBJECT IDENTIFIER,
    aiAPModelName       DisplayString,
    aiAPCPUUtilization  Integer32,
    aiAPMemoryFree      Integer32,
    aiAPUptime          TimeTicks
```

## Closing Line

Following is the closing line—the end of the MIBs file.

```
END
```

## SNMP File

The `snmp.h` file lists the OIDs of all MIBs. Following are sections from `snmp.h` that show the complete OID of each of the Controller Transport Service (CTS) MIB elements. The list starts from the ancestral parent `iso`.

The SNMP file with all Dell MIBs is listed in [Chapter 4, “SNMP MIBs Reference” on page 35](#).

All ArubaOS MIBs inherit their OIDs from the Dell MIB node. The following rows list the MIBs that precede CTS, starting from `iso`.

```
{ "iso",                HASHNEXT("1") },
{ "org",                HASHNEXT("1.3") },
{ "dod",                HASHNEXT("1.3.6") },
{ "internet",          HASHNEXT("1.3.6.1") },
{ "private",           HASHNEXT("1.3.6.1.4") },
{ "enterprises",       HASHNEXT("1.3.6.1.4.1") },
{ "aruba",             HASHNEXT("1.3.6.1.4.1.14823") },
{ "arubaEnterpriseMibModules", HASHNEXT("1.3.6.1.4.1.14823.2") },
```

## HP OpenView

To install the Dell module for HP OpenView, log in as the root user and execute the following script:

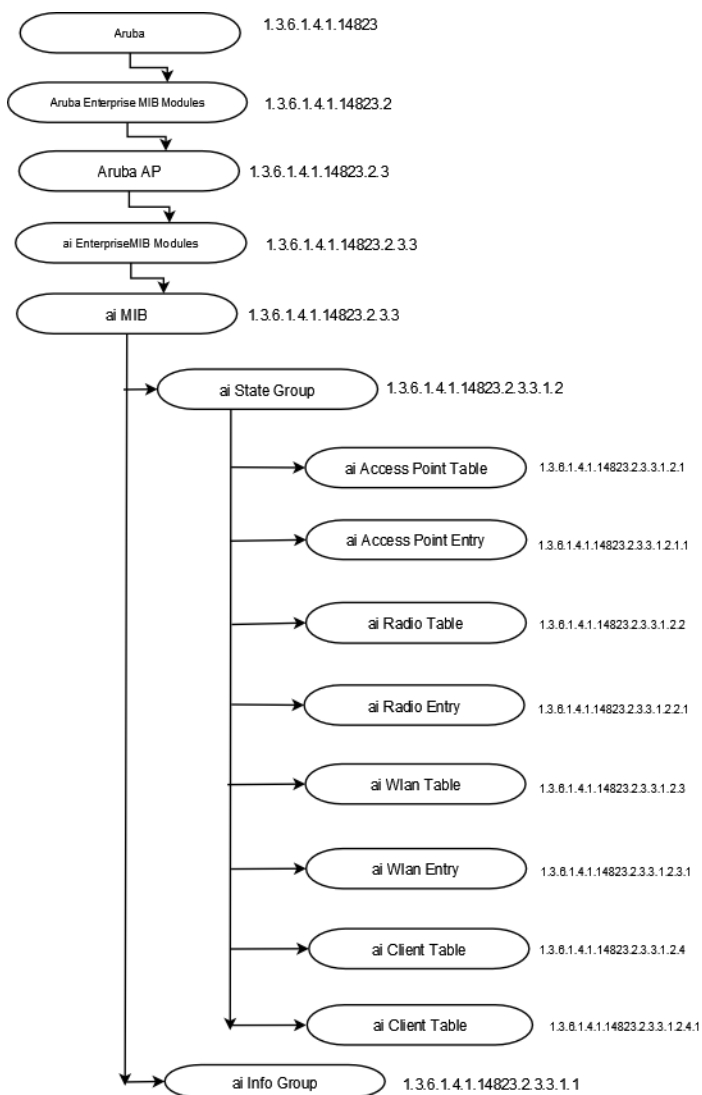
```
# $OV_CONTRIB/NNM/Dell/install
```



The chapter provides information about the Dell W-Instant MIB, as well as entities that are attempting to access the network.

Figure 4 shows the architecture of the Dell W-Instant MIB relative to 1.3.6.1.4.1.14823 (iso.org.dod.internet.private.enterprise.dell). The Dell W-Instant MIB is listed in the file *aruba-instant.my*. For information about downloading Dell W-Instant MIB file, see “[Downloading MIB Files](#)” on page 13.

**Figure 4** Dell W-Instant MIB Hierarchy



The supported tables in the Dell W-Instant MIB are listed and summarized in [Table 4](#). The objects of the supported tables are described in the following sections.

The following table lists the supported tables in the Dell W-Instant MIB:

**Table 4** *Supported Instant MIB Tables*

Group	Description
aiAccessPointTable	Contains all the access points connected to the virtual controller. This table is indexed by the MAC Address of the W-IAP.
aiRadioTable	Contains all the radios of the access points connected to the virtual controller. This table is indexed by the MAC Address and radio number.
aiWlanTable	Contains all the BSSIDs that are active on the virtual controller. This table is indexed by the MAC address and a WLAN Index of the W-IAP.
aiClientTable	Contains information about all the clients connected to the virtual controller. When a client roams from one access point to another, all the counters in this table are reset to 0.

## aiAccessPointTable

The objects of the aiAccessPointTable provide information about all the W-IAPs connected to the virtual controller.

**Table 5** *aiAccessPointTable OIDs*

Object	Object ID	
aiAccessPointEntry	1.3.6.1.4.1.14823.2.3.3.1.2.1.1	aiAccessPointTable 1
aiAPMACAddress	1.3.6.1.4.1.14823.2.3.3.1.2.1.1.1	aiAccessPointEntry 1
aiAPName	1.3.6.1.4.1.14823.2.3.3.1.2.1.1.2	aiAccessPointEntry 2
aiAPIPAddress	1.3.6.1.4.1.14823.2.3.3.1.2.1.1.3	aiAccessPointEntry 3
aiAPSerialNum	1.3.6.1.4.1.14823.2.3.3.1.2.1.1.4	aiAccessPointEntry 4
aiAPModel	1.3.6.1.4.1.14823.2.3.3.1.2.1.1.5	aiAccessPointEntry 5
aiAPModelName	1.3.6.1.4.1.14823.2.3.3.1.2.1.1.6	aiAccessPointEntry 6
aiAPCPUUtilization	1.3.6.1.4.1.14823.2.3.3.1.2.1.1.7	aiAccessPointEntry 7
aiAPMemoryFree	1.3.6.1.4.1.14823.2.3.3.1.2.1.1.8	aiAccessPointEntry 8
aiAPUptime	1.3.6.1.4.1.14823.2.3.3.1.2.1.1.9	aiAccessPointEntry 9

## aiAccessPointEntry

Syntax	aiAccessPointEntry
Max-Access	not-accessible
Status	current
Description	NA
Index	aiAPMACAddress

## aiAPMACAddress

Syntax	MacAddress (OCTET STRING). Hint: 1x:
Max-Access	read-only
Status	current
Description	MAC address of the Access Point.

## aiAPName

Syntax	DisplayString (SIZE(0..64))
Max-Access	read-only
Status	current
Description	Name of the Access Point.

## aiAPIPAddress

Syntax	IpAddress
Max-Access	read-only
Status	current
Description	IP address of the Access Point.

## aiAPSerialNum

Syntax	DisplayString (SIZE(0..64))
Max-Access	read-only
Status	current
Description	Serial number of the Access Point.

## aiAPModel

Syntax	OBJECT IDENTIFIER
Max-Access	read-only
Status	current
Description	Access Point System OID.

## **aiAPModelName**

Syntax	DisplayString (SIZE(0..32))
Max-Access	read-only
Status	current
Description	Model name of the Access Point.

## **aiAPCPUUtilization**

Syntax	Integer32
Max-Access	read-only
Status	current
Description	CPU utilization of the Access Point.

## **aiAPMemoryFree**

Syntax	Integer32
Max-Access	read-only
Status	current
Description	Amount of memory free in the access point in bytes.

## **aiAPUptime**

Syntax	TimeTicks
Max-Access	read-only
Status	current
Description	Uptime of the Access Point.

# aiRadioTable

The objects of the aiRadioTable provide information about all the radios and the related information of the Access Points.

**Table 6** aiRadioTable OIDs

Object	Object ID	
aiRadioEntry	1.3.6.1.4.1.14823.2.3.3.1.2.2.1	aiRadioTable 1
aiRadioAPMacAddress	1.3.6.1.4.1.14823.2.3.3.1.2.2.1.1	aiRadioEntry 1
aiRadioIndex	1.3.6.1.4.1.14823.2.3.3.1.2.2.1.2	aiRadioEntry 2
aiRadioMACAddress	1.3.6.1.4.1.14823.2.3.3.1.2.2.1.3	aiRadioEntry 3
aiRadioChannel	1.3.6.1.4.1.14823.2.3.3.1.2.2.1.4	aiRadioEntry 4
aiRadioTransmitPower	1.3.6.1.4.1.14823.2.3.3.1.2.2.1.5	aiRadioEntry 5
aiRadioNoiseFloor	1.3.6.1.4.1.14823.2.3.3.1.2.2.1.6	aiRadioEntry 6
aiRadioUtilization4	1.3.6.1.4.1.14823.2.3.3.1.2.2.1.7	aiRadioEntry 7
aiRadioUtilization64	1.3.6.1.4.1.14823.2.3.3.1.2.2.1.8	aiRadioEntry 8
aiRadioTxTotalFrames	1.3.6.1.4.1.14823.2.3.3.1.2.2.1.9	aiRadioEntry 9
aiRadioTxMgmtFrames	1.3.6.1.4.1.14823.2.3.3.1.2.2.1.10	aiRadioEntry 10
aiRadioTxDataFrames	1.3.6.1.4.1.14823.2.3.3.1.2.2.1.11	aiRadioEntry 11
aiRadioTxDataBytes	1.3.6.1.4.1.14823.2.3.3.1.2.2.1.12	aiRadioEntry 12
aiRadioTxDrops	1.3.6.1.4.1.14823.2.3.3.1.2.2.1.13	aiRadioEntry 13
aiRadioTxTotalFrames	1.3.6.1.4.1.14823.2.3.3.1.2.2.1.14	aiRadioEntry 14
aiRadioRxDataFrames	1.3.6.1.4.1.14823.2.3.3.1.2.2.1.15	aiRadioEntry 15
aiRadioRxDataBytes	1.3.6.1.4.1.14823.2.3.3.1.2.2.1.16	aiRadioEntry 16
aiRadioRxMgmtFrames	1.3.6.1.4.1.14823.2.3.3.1.2.2.1.17	aiRadioEntry 17
aiRadioRxBad	1.3.6.1.4.1.14823.2.3.3.1.2.2.1.18	aiRadioEntry 18
aiRadioPhyEvents	1.3.6.1.4.1.14823.2.3.3.1.2.2.1.19	aiRadioEntry 19

## aiRadioEntry

Syntax	aiRadioEntry
Max-Access	not-accessible
Status	current
Description	NA
Index	aiRadioAPMACAddress, aiRadioIndex

## aiRadioAPMacAddress

Syntax	MacAddress (OCTET STRING). Hint: 1x:
Max-Access	read-only
Status	current
Description	MAC Address of the Access Point where this radio is active.

## aiRadioIndex

Syntax	Integer32
Max-Access	read-only
Status	current
Description	Radio number of the Access Point.

## aiRadioMACAddress

Syntax	MacAddress
Max-Access	read-only
Status	current
Description	Radio MAC address of the Access Point.

## aiRadioChannel

Syntax	Integer32
Max-Access	read-only
Status	current
Description	Radio channel. First byte contains primary channel and first two bits on second byte contains indicator for secondary channel. If first two bits of second byte is 0, it is a 20MHz channel. If first two bits of second byte is 01, secondary channel is above primary channel, if first two bits of second by is 10, secondary channel is below the primary channel.

## aiRadioTransmitPower

Syntax	Integer32
Max-Access	read-only
Status	current
Description	Radio transmit power of the Access Point.



## **aiRadioNoiseFloor**

Syntax	Integer32
Max-Access	read-only
Status	current
Description	Radio noise of the Access Point in dBm.

## **aiRadioUtilization4**

Syntax	Integer32
Max-Access	read-only
Status	current
Description	Radio channel utilization 4 second average.

## **aiRadioUtilization64**

Syntax	Integer32
Max-Access	read-only
Status	current
Description	Radio channel utilization 64 second average.

## **aiRadioTxTotalFrames**

Syntax	Counter32
Max-Access	read-only
Status	current
Description	Total number of frames transmitted.

## **aiRadioTxMgmtFrames**

Syntax	Counter32
Max-Access	read-only
Status	current
Description	Total number of management frames transmitted.

## **aiRadioTxDataFrames**

Syntax	Counter32
Max-Access	read-only
Status	current
Description	Total number of data frames transmitted.

## **aiRadioTxDataBytes**

Syntax	Counter32
Max-Access	read-only
Status	current
Description	Total number of data bytes transmitted.

## **aiRadioTxDrops**

Syntax	Counter32
Max-Access	read-only
Status	current
Description	Total number of frames dropped during transmission.

## **aiRadioRxTotalFrames**

Syntax	Counter32
Max-Access	read-only
Status	current
Description	Total number of received frames.

## **aiRadioRxDataFrames**

Syntax	Counter32
Max-Access	read-only
Status	current
Description	Total number of received data frames.

## **aiRadioRxDataBytes**

Syntax	Counter32
Max-Access	read-only
Status	current
Description	Total number of received data bytes.

## **aiRadioRxMgmtFrames**

Syntax	Counter32
Max-Access	read-only
Status	current
Description	Total number of received management frames.

## **aiRadioRxBad**

Syntax	Counter32
Max-Access	read-only
Status	current
Description	Total number of frames received in error.

## **aiRadioPhyEvents**

Syntax	Counter32
Max-Access	read-only
Status	current
Description	Number of physical layer events that indicates frames not received because of interference.

# aiWlanTable

The objects of the aiWlanTable provide information about all the BSSIDs active on the virtual controller.

**Table 7** aiWlanTable OIDs

Object	Object ID	
aiWlanEntry	1.3.6.1.4.1.14823.2.3.3.1.2.3.1	aiWlanTable 1
aiWlanAPMACAddress	1.3.6.1.4.1.14823.2.3.3.1.2.3.1.1	aiWlanEntry 1
aiWlanIndex	1.3.6.1.4.1.14823.2.3.3.1.2.3.1.2	aiWlanEntry 2
aiWlanESSID	1.3.6.1.4.1.14823.2.3.3.1.2.3.1.3	aiWlanEntry 3
aiWlanMACAddress	1.3.6.1.4.1.14823.2.3.3.1.2.3.1.4	aiWlanEntry 4
aiWlanTxTotalFrames	1.3.6.1.4.1.14823.2.3.3.1.2.3.1.5	aiWlanEntry 5
aiWlanTxDataFrames	1.3.6.1.4.1.14823.2.3.3.1.2.3.1.6	aiWlanEntry 6
aiWlanTxDataBytes	1.3.6.1.4.1.14823.2.3.3.1.2.3.1.7	aiWlanEntry 7
aiWlanRxTotalFrames	1.3.6.1.4.1.14823.2.3.3.1.2.3.1.8	aiWlanEntry 8
aiWlanRxDataFrames	1.3.6.1.4.1.14823.2.3.3.1.2.3.1.9	aiWlanEntry 9
aiWlanRxDataBytes	1.3.6.1.4.1.14823.2.3.3.1.2.3.1.10	aiWlanEntry 10

## aiWlanEntry

Syntax	AiWlanEntry
Max-Access	not-accessible
Status	current
Description	NA
Index	aiWlanAPMACAddress, aiWlanIndex

## aiWlanAPMACAddress

Syntax	MacAddress (OCTET STRING). Hint: 1x:
Max-Access	read-only
Status	current
Description	MAC Address of the Access Point where WLAN is active.

## aiWlanIndex

Syntax	Integer32
Max-Access	read-only
Status	current
Description	Index of the WLAN. This is a unique index assigned to the active WLAN on the Access Point.

## aiWlanESSID

Syntax	DisplayString
Max-Access	read-only
Status	current
Description	ESSID of the WLAN

## aiWlanMACAddress

Syntax	MacAddress (OCTET STRING). Hint: 1x:
Max-Access	read-only
Status	current
Description	BSSID of the WLAN

## aiWlanTxTotalFrames

Syntax	Counter32
Max-Access	read-only
Status	current
Description	Total number of frames transmitted.

## aiWlanTxDataFrames

Syntax	Counter32
Max-Access	read-only
Status	current
Description	Total number of data frames transmitted.

## **aiWlanTxDataBytes**

Syntax	Counter32
Max-Access	read-only
Status	current
Description	Total number of data bytes transmitted.

## **aiWlanRxTotalFrames**

Syntax	Counter32
Max-Access	read-only
Status	current
Description	Total number of received frames.

## **aiWlanRxDataFrames**

Syntax	Counter32
Max-Access	read-only
Status	current
Description	Total number of received data frames.

## **aiWlanRxDataBytes**

Syntax	Counter32
Max-Access	read-only
Status	current
Description	Total number of received data bytes.

## aiClientTable

The objects of the aiWlanTable provide information about all the clients connected to the virtual controller.

**Table 8** aiClientTable OID

Object	Object ID	
aiClientTable Entry	1.3.6.1.4.1.14823.2.3.3.1.2.4.1	aiClientTable 1
aiClientMACAddress	1.3.6.1.4.1.14823.2.3.3.1.2.4.1.1	aiClientEntry 1
aiClientWlanMACAddress	1.3.6.1.4.1.14823.2.3.3.1.2.4.1.2	aiClientEntry 2
aiClientIPAddress	1.3.6.1.4.1.14823.2.3.3.1.2.4.1.3	aiClientEntry 3
aiClientAPIAddress	1.3.6.1.4.1.14823.2.3.3.1.2.4.1.4	aiClientEntry 4
aiClientName	1.3.6.1.4.1.14823.2.3.3.1.2.4.1.5	aiClientEntry 5
aiClientOperatingSystem	1.3.6.1.4.1.14823.2.3.3.1.2.4.1.6	aiClientEntry 6
aiClientSNR	1.3.6.1.4.1.14823.2.3.3.1.2.4.1.7	aiClientEntry 7
aiClientRxDataFrames	1.3.6.1.4.1.14823.2.3.3.1.2.4.1.8	aiClientEntry 8
aiClientTxDataBytes	1.3.6.1.4.1.14823.2.3.3.1.2.4.1.9	aiClientEntry 9
aiClientRxRetries	1.3.6.1.4.1.14823.2.3.3.1.2.4.1.10	aiClientEntry 10
aiClientTxRate	1.3.6.1.4.1.14823.2.3.3.1.2.4.1.11	aiClientEntry 11
aiClientRxDataFrames	1.3.6.1.4.1.14823.2.3.3.1.2.4.1.12	aiClientEntry 12
aiClientRxDataBytes	1.3.6.1.4.1.14823.2.3.3.1.2.4.1.13	aiClientEntry 13
aiClientRxRetries	1.3.6.1.4.1.14823.2.3.3.1.2.4.1.14	aiClientEntry 14
aiClientRxRate	1.3.6.1.4.1.14823.2.3.3.1.2.4.1.15	aiClientEntry 15
aiClientUptime	1.3.6.1.4.1.14823.2.3.3.1.2.4.1.16	aiClientEntry 16

### aiClientTable Entry

Syntax	aiClientTable Entry
Max-Access	not-accessible
Status	current
Description	NA
Index	aiClientMACAddress

### aiClientMACAddress

Syntax	MacAddress (OCTET STRING). Hint: 1x:
Max-Access	read-only
Status	current
Description	MAC Address of the client.

## **aiClientWlanMACAddress**

Syntax	MacAddress
Max-Access	read-only
Status	current
Description	BSSID of WLAN where client is associated.

## **aiClientIPAddress**

Syntax	IpAddress
Max-Access	read-only
Status	current
Description	IP address of the client.

## **aiClientAPIPAddress**

Syntax	IpAddress
Max-Access	read-only
Status	current
Description	Radio channel. First byte contains primary channel and first two bits on second byte contains indicator for secondary channel. If first two bits of second byte is 0, it is a 20MHz channel. If first two bits of second byte is 01, secondary channel is above primary channel, if first two bits of second by is 10, secondary channel is below the primary channel.

## **aiClientName**

Syntax	DisplayString
Max-Access	read-only
Status	current
Description	Name of the user using the client.

## **aiClientOperatingSystem**

Syntax	DisplayString
Max-Access	read-only
Status	current
Description	Operating system of the client.



## **aiClientSNR**

Syntax	Integer32
Max-Access	read-only
Status	current
Description	Signal to noise ratio of the client connected to the Access Point

## **aiClientTxDataFrames**

Syntax	Counter32
Max-Access	read-only
Status	current
Description	Total number of frames transmitted by the client.

## **aiClientTxDataBytes**

Syntax	Counter32
Max-Access	read-only
Status	current
Description	Total number of bytes transmitted by the client.

## **aiClientTxRetries**

Syntax	Counter32
Max-Access	read-only
Status	current
Description	Total number of retry frames transmitted by the client.

## **aiClientTxRate**

Syntax	Integer32
Max-Access	read-only
Status	current
Description	Transmission rate of the client in mbps.

## **aiClientRxDataFrames**

Syntax	Counter32
Max-Access	read-only
Status	current
Description	Total number of frames received by the client in mbps.

## **aiClientRxDataBytes**

Syntax	Counter32
Max-Access	read-only
Status	current
Description	Total number of bytes received by the client in mbps.

## **aiClientRxRetries**

Syntax	Counter32
Max-Access	read-only
Status	current
Description	Total number of retry frames received by the client.

## **aiClientRxRate**

Syntax	Integer32
Max-Access	read-only
Status	current
Description	Receiving rate of the client in mbps.

## **aiClientUptime**

Syntax	TimeTicks
Max-Access	read-only
Status	current
Description	Client uptime. On mobility event all counters are reset to 0 and uptime resets to 0.

# Chapter 4

## SNMP MIBs Reference

This section provides lists of the SNMP MIB OIDs that are related to Dell PowerConnect W-Instant. The following table defines the sysObjectIds for Dell PowerConnect products.

**Table 9** *SNMP OIDs returned as sysObjectID for Dell products*

SNMP MIB	OID
aiInfoGroup	1.3.6.1.4.1.14823.2.3.3.1.1
aiStateGroup	1.3.6.1.4.1.14823.2.3.3.1.2
aiVirtualControllerKey	1.3.6.1.4.1.14823.2.3.3.1.1.1.0
aiVirtualControllerName	1.3.6.1.4.1.14823.2.3.3.1.1.2.0
aiVirtualControllerOrganization	1.3.6.1.4.1.14823.2.3.3.1.1.3.0
aiVirtualControllerVersion	1.3.6.1.4.1.14823.2.3.3.1.1.4.0
aiVirtualControllerIPAddress	1.3.6.1.4.1.14823.2.3.3.1.1.5.0
aiMasterIPAddress	1.3.6.1.4.1.14823.2.3.3.1.1.6.0
aiAccessPointTable	1.3.6.1.4.1.14823.2.3.3.1.2.1
aiAccessPointEntry	1.3.6.1.4.1.14823.2.3.3.1.2.1.1
aiAPMACAddress	1.3.6.1.4.1.14823.2.3.3.1.2.1.1.1
aiAPName	1.3.6.1.4.1.14823.2.3.3.1.2.1.1.2
aiAPIPAddress	1.3.6.1.4.1.14823.2.3.3.1.2.1.1.3
aiAPSerialNum	1.3.6.1.4.1.14823.2.3.3.1.2.1.1.4
aiAPModel	1.3.6.1.4.1.14823.2.3.3.1.2.1.1.5
aiAPModelName	1.3.6.1.4.1.14823.2.3.3.1.2.1.1.6
aiAPCPUUtilization	1.3.6.1.4.1.14823.2.3.3.1.2.1.1.7
aiAPMemoryFree	1.3.6.1.4.1.14823.2.3.3.1.2.1.1.8
aiAPUptime	1.3.6.1.4.1.14823.2.3.3.1.2.1.1.9
aiRadioTable	1.3.6.1.4.1.14823.2.3.3.1.2.2
aiRadioEntry	1.3.6.1.4.1.14823.2.3.3.1.2.2.1
aiWlanTable	1.3.6.1.4.1.14823.2.3.3.1.2.3
aiWlanEntry	1.3.6.1.4.1.14823.2.3.3.1.2.3.1
aiClientTable	1.3.6.1.4.1.14823.2.3.3.1.2.4
aiClientEntry	1.3.6.1.4.1.14823.2.3.3.1.2.4.1
aiRadioAPMACAddress	1.3.6.1.4.1.14823.2.3.3.1.2.2.1.1
aiRadioIndex	1.3.6.1.4.1.14823.2.3.3.1.2.2.1.2
aiRadioMACAddress	1.3.6.1.4.1.14823.2.3.3.1.2.2.1.8

**Table 9** SNMP OIDs returned as sysObjectID for Dell products (Continued)

SNMP MIB	OID
aiRadioChannel	1.3.6.1.4.1.14823.2.3.3.1.2.2.1.4
aiRadioTransmitPower	1.3.6.1.4.1.14823.2.3.3.1.2.2.1.5
aiRadioNoiseFloor	1.3.6.1.4.1.14823.2.3.3.1.2.2.1.6
aiRadioUtilization4	1.3.6.1.4.1.14823.2.3.3.1.2.2.1.7
aiRadioUtilization64	1.3.6.1.4.1.14823.2.3.3.1.2.2.1.8
aiRadioTxTotalFrames	1.3.6.1.4.1.14823.2.3.3.1.2.2.1.9
aiRadioTxMgmtFrames	1.3.6.1.4.1.14823.2.3.3.1.2.2.1.10
aiRadioTxDataFrames	1.3.6.1.4.1.14823.2.3.3.1.2.2.1.11
aiRadioTxDataBytes	1.3.6.1.4.1.14823.2.3.3.1.2.2.1.12
aiRadioTxDrops	1.3.6.1.4.1.14823.2.3.3.1.2.2.1.13
aiRadioRxTotalFrames	1.3.6.1.4.1.14823.2.3.3.1.2.2.1.14
aiRadioRxDataFrames	1.3.6.1.4.1.14823.2.3.3.1.2.2.1.15
aiRadioRxDataBytes	1.3.6.1.4.1.14823.2.3.3.1.2.2.1.16
aiRadioRxMgmtFrames	1.3.6.1.4.1.14823.2.3.3.1.2.2.1.17
aiRadioRxBad	1.3.6.1.4.1.14823.2.3.3.1.2.2.1.18
aiRadioPhyEvents	1.3.6.1.4.1.14823.2.3.3.1.2.2.1.19
aiWlanAPMACAddress	1.3.6.1.4.1.14823.2.3.3.1.2.3.1.1
aiWlanIndex	1.3.6.1.4.1.14823.2.3.3.1.2.3.1.2
aiWlanESSID	1.3.6.1.4.1.14823.2.3.3.1.2.3.1.3
aiWlanMACAddress	1.3.6.1.4.1.14823.2.3.3.1.2.3.1.4
aiWlanTxTotalFrames	1.3.6.1.4.1.14823.2.3.3.1.2.3.1.5
aiWlanTxDataFrames	1.3.6.1.4.1.14823.2.3.3.1.2.3.1.6
aiWlanTxDataBytes	1.3.6.1.4.1.14823.2.3.3.1.2.3.1.7
aiWlanRxTotalFrames	1.3.6.1.4.1.14823.2.3.3.1.2.3.1.8
aiWlanRxDataFrames	1.3.6.1.4.1.14823.2.3.3.1.2.3.1.9
aiWlanRxDataBytes	1.3.6.1.4.1.14823.2.3.3.1.2.3.1.10
aiClientMACAddress	1.3.6.1.4.1.14823.2.3.3.1.2.4.1.1
aiClientWlanMACAddress	1.3.6.1.4.1.14823.2.3.3.1.2.4.1.2
aiClientIPAddress	1.3.6.1.4.1.14823.2.3.3.1.2.4.1.3
aiClientAPIPAddress	1.3.6.1.4.1.14823.2.3.3.1.2.4.1.4
aiClientName	1.3.6.1.4.1.14823.2.3.3.1.2.4.1.5
aiClientOperatingSystem	1.3.6.1.4.1.14823.2.3.3.1.2.4.1.6
aiClientSNR	1.3.6.1.4.1.14823.2.3.3.1.2.4.1.7
aiClientTxDataFrames	1.3.6.1.4.1.14823.2.3.3.1.2.4.1.8

**Table 9** *SNMP OIDs returned as sysObjectID for Dell products (Continued)*

SNMP MIB	OID
aiClientTxDataBytes	1.3.6.1.4.1.14823.2.3.3.1.2.4.1.9
aiClientTxRetries	1.3.6.1.4.1.14823.2.3.3.1.2.4.1.10
aiClientTxRate	1.3.6.1.4.1.14823.2.3.3.1.2.4.1.11
aiClientRxDataFrames	1.3.6.1.4.1.14823.2.3.3.1.2.4.1.12
aiClientRxDataBytes	1.3.6.1.4.1.14823.2.3.3.1.2.4.1.13
aiClientRxRetries	1.3.6.1.4.1.14823.2.3.3.1.2.4.1.14
aiClientRxRate	1.3.6.1.4.1.14823.2.3.3.1.2.4.1.15
aiClientUptime	1.3.6.1.4.1.14823.2.3.3.1.2.4.1.16

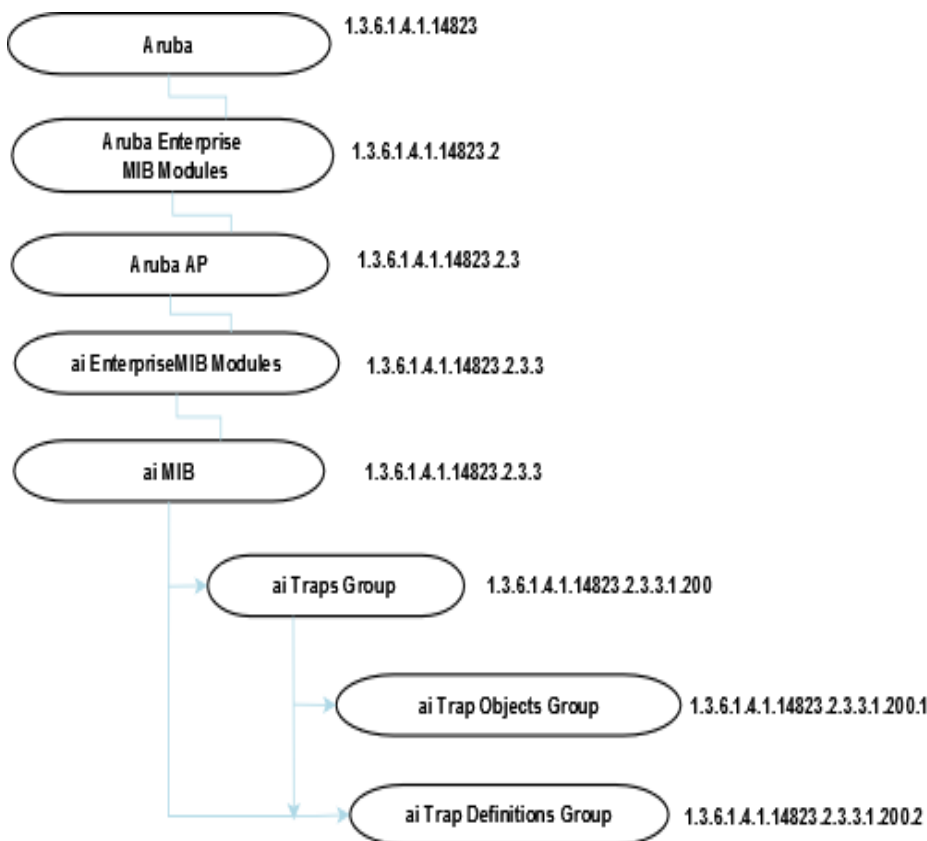


This module defines the traps that can be generated by the W-IAP. Traps are MIB objects (variables) that transmit information to the SNMP Manager when an event occurs. Traps are included as varbinds (variable bindings) in the trap protocol data unit (PDU). Varbinds are defined in the *Description* section below.

Figure 5 shows the architecture of the Traps MIB relative to 1.3.6.1.4.1.14823 (iso.org.dod.internet.private.enterprise.dell). The Traps are listed in the file *aruba-trap.mib* MIB file. For information about downloading Dell MIB files, see “[Downloading MIB Files](#)” on page 13.

### Trap Hierarchy

Figure 5 Trap Hierarchy



## ai Traps Objects Group

The following table lists the supported trap objects in this group:

**Table 10** *aiTraps Objects Group OIDs*

Object	Object ID	
wlsxTrapAPMacAddress	1.3.6.1.4.1.14823.2.3.3.1.200.1.1	wlsxTrapObjectsGroup 1
wlsxTrapAPIpAddress	1.3.6.1.4.1.14823.2.3.3.1.200.1.2	wlsxTrapObjectsGroup 2
wlsxTrapAPBSSID	1.3.6.1.4.1.14823.2.3.3.1.200.1.3	wlsxTrapObjectsGroup 3
wlsxTrapEssid	1.3.6.1.4.1.14823.2.3.3.1.200.1.4	wlsxTrapObjectsGroup 4
wlsxTrapTargetAPBSSID	1.3.6.1.4.1.14823.2.3.3.1.200.1.5	wlsxTrapObjectsGroup 5
wlsxTrapTargetAPSSID	1.3.6.1.4.1.14823.2.3.3.1.200.1.6	wlsxTrapObjectsGroup 6
wlsxTrapTargetAPChannel	1.3.6.1.4.1.14823.2.3.3.1.200.1.7	wlsxTrapObjectsGroup 7
wlsxTrapNodeMac	1.3.6.1.4.1.14823.2.3.3.1.200.1.8	wlsxTrapObjectsGroup 8
wlsxTrapSourceMac	1.3.6.1.4.1.14823.2.3.3.1.200.1.9	wlsxTrapObjectsGroup 9
wlsxReceiverMac	1.3.6.1.4.1.14823.2.3.3.1.200.1.10	wlsxTrapObjectsGroup 10
wlsxTrapTransmitterMac	1.3.6.1.4.1.14823.2.3.3.1.200.1.11	wlsxTrapObjectsGroup 11
wlsxTrapReceiverMac	1.3.6.1.4.1.14823.2.3.3.1.200.1.12	wlsxTrapObjectsGroup 12
wlsxTrapSnr	1.3.6.1.4.1.14823.2.3.3.1.200.1.13	wlsxTrapObjectsGroup 13
wlsxTrapSignatureName	1.3.6.1.4.1.14823.2.3.3.1.200.1.14	wlsxTrapObjectsGroup 14
wlsxTrapFrameType	1.3.6.1.4.1.14823.2.3.3.1.200.1.15	wlsxTrapObjectsGroup 15
wlsxTrapAddressType	1.3.6.1.4.1.14823.2.3.3.1.200.1.16	wlsxTrapObjectsGroup 16
wlsxTrapAPLocation	1.3.6.1.4.1.14823.2.3.3.1.200.1.17	wlsxTrapObjectsGroup 17
wlsxTrapAPChannel	1.3.6.1.4.1.14823.2.3.3.1.200.1.18	wlsxTrapObjectsGroup 18
wlsxTrapAPTxPower	1.3.6.1.4.1.14823.2.3.3.1.200.1.19	wlsxTrapObjectsGroup 19
wlsxTrapMatchedMac	1.3.6.1.4.1.14823.2.3.3.1.200.1.20	wlsxTrapObjectsGroup 20
wlsxTrapMatchedIp	1.3.6.1.4.1.14823.2.3.3.1.200.1.21	wlsxTrapObjectsGroup 21
wlsxTrapRogueIfoURL	1.3.6.1.4.1.14823.2.3.3.1.200.1.22	wlsxTrapObjectsGroup 22
wlsxTrapVLANId	1.3.6.1.4.1.14823.2.3.3.1.200.1.23	wlsxTrapObjectsGroup 23
wlsxTrapAdminStatus	1.3.6.1.4.1.14823.2.3.3.1.200.1.24	wlsxTrapObjectsGroup 24
wlsxTrapOperStatus	1.3.6.1.4.1.14823.2.3.3.1.200.1.25	wlsxTrapObjectsGroup 25
wlsxTrapAuthServerName	1.3.6.1.4.1.14823.2.3.3.1.200.1.26	wlsxTrapObjectsGroup 26
wlsxTrapAuthServerTimeout	1.3.6.1.4.1.14823.2.3.3.1.200.1.27	wlsxTrapObjectsGroup 27
wlsxTrapCardSlot	1.3.6.1.4.1.14823.2.3.3.1.200.1.28	wlsxTrapObjectsGroup 28
wlsxTrapTemperatureValue	1.3.6.1.4.1.14823.2.3.3.1.200.1.29	wlsxTrapObjectsGroup 29
wlsxTrapProcessName	1.3.6.1.4.1.14823.2.3.3.1.200.1.30	wlsxTrapObjectsGroup 30
wlsxTrapFanNumber	1.3.6.1.4.1.14823.2.3.3.1.200.1.31	wlsxTrapObjectsGroup 31
wlsxTrapVoltageType	1.3.6.1.4.1.14823.2.3.3.1.200.1.32	wlsxTrapObjectsGroup 32



**Table 10** *aiTraps Objects Group OIDs (Continued)*

Object	Object ID	
wlsxTrapVoltageValue	1.3.6.1.4.1.14823.2.3.3.1.200.1.33	wlsxTrapObjectsGroup 33
wlsxTrapStationBlackListReason	1.3.6.1.4.1.14823.2.3.3.1.200.1.34	wlsxTrapObjectsGroup 34
wlsxTrapSpoofedIpAddress	1.3.6.1.4.1.14823.2.3.3.1.200.1.35	wlsxTrapObjectsGroup 35
wlsxTrapSpoofedOldPhyAddress	1.3.6.1.4.1.14823.2.3.3.1.200.1.36	wlsxTrapObjectsGroup 36
wlsxTrapSpoofedNewPhyAddress	1.3.6.1.4.1.14823.2.3.3.1.200.1.37	wlsxTrapObjectsGroup 37
wlsxTrapDBName	1.3.6.1.4.1.14823.2.3.3.1.200.1.38	wlsxTrapObjectsGroup 38
wlsxTrapDBUserName	1.3.6.1.4.1.14823.2.3.3.1.200.1.39	wlsxTrapObjectsGroup 39
wlsxTrapDBIpAddress	1.3.6.1.4.1.14823.2.3.3.1.200.1.40	wlsxTrapObjectsGroup 40
wlsxTrapDBType	1.3.6.1.4.1.14823.2.3.3.1.200.1.41	wlsxTrapObjectsGroup 41
wlsxTrapVrrpID	1.3.6.1.4.1.14823.2.3.3.1.200.1.42	wlsxTrapObjectsGroup 42
wlsxTrapVrrpMasterIp	1.3.6.1.4.1.14823.2.3.3.1.200.1.43	wlsxTrapObjectsGroup 43
wlsxTrapVrrpOperState	1.3.6.1.4.1.14823.2.3.3.1.200.1.44	wlsxTrapObjectsGroup 44
wlsxTrapESIServerGrpName	1.3.6.1.4.1.14823.2.3.3.1.200.1.45	wlsxTrapObjectsGroup 45
wlsxTrapESIServerName	1.3.6.1.4.1.14823.2.3.3.1.200.1.46	wlsxTrapObjectsGroup 46
wlsxTrapESIServerIpAddress	1.3.6.1.4.1.14823.2.3.3.1.200.1.47	wlsxTrapObjectsGroup 47
wlsxTrapLicenseDaysRemaining	1.3.6.1.4.1.14823.2.3.3.1.200.1.48	wlsxTrapObjectsGroup 48
wlsxTrapSwitchIp	1.3.6.1.4.1.14823.2.3.3.1.200.1.49	wlsxTrapObjectsGroup 49
wlsxTrapSwitchRole	1.3.6.1.4.1.14823.2.3.3.1.200.1.50	wlsxTrapObjectsGroup 50
wlsxTrapUserIpAddress	1.3.6.1.4.1.14823.2.3.3.1.200.1.51	wlsxTrapObjectsGroup 51
wlsxTrapUserPhyAddress	1.3.6.1.4.1.14823.2.3.3.1.200.1.52	wlsxTrapObjectsGroup 52
wlsxTrapUserName	1.3.6.1.4.1.14823.2.3.3.1.200.1.53	wlsxTrapObjectsGroup 53
wlsxTrapUserRole	1.3.6.1.4.1.14823.2.3.3.1.200.1.54	wlsxTrapObjectsGroup 54
wlsxTrapUserAuthenticationMethod	1.3.6.1.4.1.14823.2.3.3.1.200.1.55	wlsxTrapObjectsGroup 55
wlsxTrapAPRadioNumber	1.3.6.1.4.1.14823.2.3.3.1.200.1.56	wlsxTrapObjectsGroup 56
wlsxTrapRogueInfoURL	1.3.6.1.4.1.14823.2.3.3.1.200.1.57	wlsxTrapObjectsGroup 57
wlsxTrapInterferingAPInfoURL	1.3.6.1.4.1.14823.2.3.3.1.200.1.58	wlsxTrapObjectsGroup 58
wlsxTrapPortNumber	1.3.6.1.4.1.14823.2.3.3.1.200.1.59	wlsxTrapObjectsGroup 59
wlsxTrapTime	1.3.6.1.4.1.14823.2.3.3.1.200.1.60	wlsxTrapObjectsGroup 60
wlsxTrapHostIp	1.3.6.1.4.1.14823.2.3.3.1.200.1.61	wlsxTrapObjectsGroup 61
wlsxTrapHostPort	1.3.6.1.4.1.14823.2.3.3.1.200.1.63	wlsxTrapObjectsGroup 62
wlsxTrapConfigurationId	1.3.6.1.4.1.14823.2.3.3.1.200.1.63	wlsxTrapObjectsGroup 63
wlsxTrapCTSURL	1.3.6.1.4.1.14823.2.3.3.1.200.1.64	wlsxTrapObjectsGroup 64
wlsxTrapCTSTransferType	1.3.6.1.4.1.14823.2.3.3.1.200.1.65	wlsxTrapObjectsGroup 65
wlsxTrapConfigurationState	1.3.6.1.4.1.14823.2.3.3.1.200.1.66	wlsxTrapObjectsGroup 66

**Table 10** *aiTraps Objects Group OIDs (Continued)*

Object	Object ID	
wlsxTrapUpdateFailureReason	1.3.6.1.4.1.14823.2.3.3.1.200.1.67	wlsxTrapObjectsGroup 67
wlsxTrapUpdateFailedObj	1.3.6.1.4.1.14823.2.3.3.1.200.1.68	wlsxTrapObjectsGroup 68
wlsxTrapTableEntryChangeType	1.3.6.1.4.1.14823.2.3.3.1.200.1.69	wlsxTrapObjectsGroup 69
wlsxTrapGlobalConfigObj	1.3.6.1.4.1.14823.2.3.3.1.200.1.70	wlsxTrapObjectsGroup 70
wlsxTrapTableGenNumber	1.3.6.1.4.1.14823.2.3.3.1.200.1.71	wlsxTrapObjectsGroup 71
wlsxTrapLicenseId	1.3.6.1.4.1.14823.2.3.3.1.200.1.72	wlsxTrapObjectsGroup 72
wlsxTrapConfidenceLevel	1.3.6.1.4.1.14823.2.3.3.1.200.1.73	wlsxTrapObjectsGroup 73
wlsxTrapMissingLicenses	1.3.6.1.4.1.14823.2.3.3.1.200.1.74	wlsxTrapObjectsGroup 74
wlsxVoiceCurrentNumCdr	1.3.6.1.4.1.14823.2.3.3.1.200.1.75	wlsxTrapObjectsGroup 75
wlsxTrapTunnelId	1.3.6.1.4.1.14823.2.3.3.1.200.1.76	wlsxTrapObjectsGroup 76
wlsxTrapTunnelStatus	1.3.6.1.4.1.14823.2.3.3.1.200.1.77	wlsxTrapObjectsGroup 77
wlsxTrapTunnelUpReason	1.3.6.1.4.1.14823.2.3.3.1.200.1.78	wlsxTrapObjectsGroup 78
wlsxTrapTunnelDownReason	1.3.6.1.4.1.14823.2.3.3.1.200.1.79	wlsxTrapObjectsGroup 79
wlsxTrapApSerialNumber	1.3.6.1.4.1.14823.2.3.3.1.200.1.80	wlsxTrapObjectsGroup 80
wlsxTraptimeStr	1.3.6.1.4.1.14823.2.3.3.1.200.1.81	wlsxTrapObjectsGroup 81
wlsxTrapMasterIp	1.3.6.1.4.1.14823.2.3.3.1.200.1.82	wlsxTrapObjectsGroup 82
wlsxTrapLocalIp	1.3.6.1.4.1.14823.2.3.3.1.200.1.83	wlsxTrapObjectsGroup 83
wlsxTrapMasterName	1.3.6.1.4.1.14823.2.3.3.1.200.1.84	wlsxTrapObjectsGroup 84
wlsxTrapLocalName	1.3.6.1.4.1.14823.2.3.3.1.200.1.85	wlsxTrapObjectsGroup 85
wlsxTrapPrimaryControllerIp	1.3.6.1.4.1.14823.2.3.3.1.200.1.86	wlsxTrapObjectsGroup 86
wlsxTrapBackupControllerIp	1.3.6.1.4.1.14823.2.3.3.1.200.1.87	wlsxTrapObjectsGroup 87
wlsxTrapSpoofedFrameType	1.3.6.1.4.1.14823.2.3.3.1.200.1.88	wlsxTrapObjectsGroup 88
wlsxTrapAssociationType	1.3.6.1.4.1.14823.2.3.3.1.200.1.89	wlsxTrapObjectsGroup 89
wlsxTrapDeviceIpAddress	1.3.6.1.4.1.14823.2.3.3.1.200.1.90	wlsxTrapObjectsGroup 90
wlsxTrapDeviceMac	1.3.6.1.4.1.14823.2.3.3.1.200.1.91	wlsxTrapObjectsGroup 91
wlsxTrapVcIpAddress	1.3.6.1.4.1.14823.2.3.3.1.200.1.92	wlsxTrapObjectsGroup 92
wlsxTrapVcMacAddress	1.3.6.1.4.1.14823.2.3.3.1.200.1.93	wlsxTrapObjectsGroup 93
wlsxTrapAPName	1.3.6.1.4.1.14823.2.3.3.1.200.1.94	wlsxTrapObjectsGroup 94
wlsxTrapApMode	1.3.6.1.4.1.14823.2.3.3.1.200.1.95	wlsxTrapObjectsGroup 95
wlsxTrapAPPrevChannel	1.3.6.1.4.1.14823.2.3.3.1.200.1.96	wlsxTrapObjectsGroup 96
wlsxTrapAPPrevChannelSec	1.3.6.1.4.1.14823.2.3.3.1.200.1.97	wlsxTrapObjectsGroup 97
wlsxTrapAPPrevTxPower	1.3.6.1.4.1.14823.2.3.3.1.200.1.98	wlsxTrapObjectsGroup 98
wlsxTrapAPCurMode	1.3.6.1.4.1.14823.2.3.3.1.200.1.99	wlsxTrapObjectsGroup 99
wlsxTrapAPPrevMode	1.3.6.1.4.1.14823.2.3.3.1.200.1.100	wlsxTrapObjectsGroup 100

**Table 10** *aiTraps Objects Group OIDs (Continued)*

Object	Object ID	
<a href="#">wlsxTrapAPARMChangeReason</a>	1.3.6.1.4.1.14823.2.3.3.1.200.1.101	wlsxTrapObjectsGroup 101
<a href="#">wlsxTrapAPChannelSec</a>	1.3.6.1.4.1.14823.2.3.3.1.200.1.102	wlsxTrapObjectsGroup 102
<a href="#">wlsxTrapUserAttributeChangeType</a>	1.3.6.1.4.1.14823.2.3.3.1.200.1.103	wlsxTrapObjectsGroup 103
<a href="#">wlsxTrapAPControllerIp</a>	1.3.6.1.4.1.14823.2.3.3.1.200.1.104	wlsxTrapObjectsGroup 104
<a href="#">wlsxTrapApMasterStatus</a>	1.3.6.1.4.1.14823.2.3.3.1.200.1.105	wlsxTrapObjectsGroup 105
<a href="#">wlsxTrapCaName</a>	1.3.6.1.4.1.14823.2.3.3.1.200.1.106	wlsxTrapObjectsGroup 106
<a href="#">wlsxTrapCrIName</a>	1.3.6.1.4.1.14823.2.3.3.1.200.1.107	wlsxTrapObjectsGroup 107
<a href="#">wlsxTrapCount</a>	1.3.6.1.4.1.14823.2.3.3.1.200.1.108	wlsxTrapObjectsGroup 108
<a href="#">wlsxTrapAPPreviousUplinkType</a>	1.3.6.1.4.1.14823.2.3.3.1.200.1.130	wlsxTrapObjectsGroup 130
<a href="#">wlsxTrapAPPreviousUplinkActiveTime</a>	1.3.6.1.4.1.14823.2.3.3.1.200.1.131	wlsxTrapObjectsGroup 131
<a href="#">wlsxTrapAPActiveUplinkType</a>	1.3.6.1.4.1.14823.2.3.3.1.200.1.132	wlsxTrapObjectsGroup 132
<a href="#">wlsxTrapAPUplinkChangeReason</a>	1.3.6.1.4.1.14823.2.3.3.1.200.1.133	wlsxTrapObjectsGroup 133

**wlsxTrapAPMacAddress**

Syntax	MacAddress
Max-Access	accessible-for-notify
Status	current
Description	This object is used in the traps to indicate the wired MAC address of an access point, for which the trap is being raised.

**wlsxTrapAPIpAddress**

Syntax	IpAddress
Max-Access	accessible-for-notify
Status	current
Description	This object is used in the traps to indicate the IP address of an access point for which for which the trap is being raised.

**wlsxTrapAPBSSID**

Syntax	MacAddress
Max-Access	accessible-for-notify
Status	current
Description	This object is used in the traps to indicate the BSSID of the access point for which we are raising the trap.

## wlsxTrapEssid

Syntax	DisplayString(Size(0..64))
Max-Access	accessible-for-notify
Status	current
Description	This object is used in the traps to indicate the SSID of the access point, for which the trap is being raised.

## wlsxTrapTargetAPBSSID

Syntax	MacAddress
Max-Access	accessible-for-notify
Status	current
Description	This object is used in the traps to indicate the BSSID of the access point, for which we are raising the trap. If an Air Monitor is sending the trap then this will indicate AP. If an access point is sending the trap, then it will point to itself.

## wlsxTrapTargetAPSSID

Syntax	DisplayString(Size(0..64))
Max-Access	accessible-for-notify
Status	current
Description	This object is used in the traps to indicate the SSID of the access point, for which the trap is being raised. If an Air Monitor is sending the trap then this will indicate AP. If an access point is sending the trap, then it will point to itself.

## wlsxTrapTargetAPChannel

Syntax	Integer32
Max-Access	accessible-for-notify
Status	current
Description	This object is used in the traps to indicate the channel of the access point, for which the trap is being raised. If an wlsxr monitor is sending the trap then this will indicate AP. If an access point is sending the trap, then it will point to itself.

## wlsxTrapNodeMac

Syntax	MacAddress
Max-Access	accessible-for-notify
Status	current
Description	This object is used in the traps to indicate the MAC address of a node.

## **wlsxTrapSourceMac**

Syntax	MacAddress
Max-Access	accessible-for-notify
Status	current
Description	This object is used in the traps to indicate the MAC address of the source.

## **wlsxReceiverMac**

Syntax	MacAddress
Max-Access	accessible-for-notify
Status	current
Description	This object is used in the traps to indicate the MAC address of the receiver.

## **wlsxTrapTransmitterMac**

Syntax	MacAddress
Max-Access	accessible-for-notify
Status	current
Description	This object is used in the traps to indicate the MAC address of the transmitter.

## **wlsxTrapReceiverMac**

Syntax	MacAddress
Max-Access	accessible-for-notify
Status	current
Description	This object is used in the traps to indicate the MAC address of the receiver.

## **wlsxTrapSnr**

Syntax	Integer32
Max-Access	accessible-for-notify
Status	current
Description	This object is used in the traps to indicate the signal-to-noise ratio.

## **wlsxTrapSignatureName**

Syntax	DisplayString(Size(0..64))
Max-Access	accessible-for-notify
Status	current
Description	This object is used in the traps to indicate the signature name.

## **wlsxTrapFrameType**

Syntax	ArubaFrameType
Max-Access	accessible-for-notify
Status	current
Description	This object is used in the traps to indicate the frame type.

## **wlsxTrapAddressType**

Syntax	ArubaAddressType
Max-Access	accessible-for-notify
Status	current
Description	This object is used in the traps to indicate the address type.

## **wlsxTrapAPLocation**

Syntax	DisplayString(Size(0..64))
Max-Access	accessible-for-notify
Status	current
Description	This object is used in the traps to indicate the location of the AP.

## **wlsxTrapAPChannel**

Syntax	Integer32
Max-Access	accessible-for-notify
Status	current
Description	This object is used in the traps to indicate the current channel.

## **wlsxTrapAPTxPower**

Syntax	Integer32
Max-Access	accessible-for-notify
Status	current
Description	This object is used in the traps to indicate the AP transmit power.

## **wlsxTrapMatchedMac**

Syntax	MacAddress
Max-Access	accessible-for-notify
Status	current
Description	This object is used in the traps to indicate the MAC address.

## **wlsxTrapMatchedIp**

Syntax	IpAddress
Max-Access	accessible-for-notify
Status	current
Description	This object is used in the traps to indicate the IP address.

## **wlsxTrapRogueIfoURL**

Syntax	DisplayString(Size(0..64))
Max-Access	accessible-for-notify
Status	current
Description	This object is used to point to the WEBUI Rogue AP information URL.

## **wlsxTrapVLANId**

Syntax	Integer32
Max-Access	accessible-for-notify
Status	current
Description	This object is used in the traps to indicate the VLAN ID.

## **wlsxTrapAdminStatus**

Syntax	ArubaEnableValue(INTEGER)
Max-Access	accessible-for-notify
Status	current
Description	This object is used in the traps to indicate the admin status of VLAN.

## **wlsxTrapOperStatus**

Syntax	ArubaOperStateValue
Max-Access	accessible-for-notify
Status	current
Description	This object is used in the traps to indicate the admin status of VLAN.

## **wlsxTrapAuthServerName**

Syntax	DisplayString(Size(0..64))
Max-Access	accessible-for-notify
Status	current
Description	This object is used in the traps to indicate the authentication server used for authentication.

## **wlsxTrapAuthServerTimeout**

Syntax	Integer32
Max-Access	accessible-for-notify
Status	current
Description	This object is used in the traps to indicate the Authentication Server Timeout.

## **wlsxTrapCardSlot**

Syntax	Integer32
Max-Access	accessible-for-notify
Status	current
Description	This object is used in the traps to indicate the slot in which this card is present.

## **wlsxTrapTemperatureValue**

Syntax	DisplayString(Size(0..64))
Max-Access	accessible-for-notify
Status	current
Description	This object is used in the traps to indicate the temperature value.

## **wlsxTrapProcessName**

Syntax	DisplayString(Size(0..64))
Max-Access	accessible-for-notify
Status	current
Description	This object is used in the traps to indicate the process name.

## **wlsxTrapFanNumber**

Syntax	Integer32
Max-Access	accessible-for-notify
Status	current
Description	This object is used in the traps to indicate the fan number.

## **wlsxTrapVoltageType**

Syntax	DisplayString(Size(0..64))
Max-Access	accessible-for-notify
Status	current
Description	This object is used in the traps to indicate the type of voltage.



## **wlsxTrapVoltageValue**

Syntax	DisplayString(Size(0..64))
Max-Access	accessible-for-notify
Status	current
Description	This object is used in the traps to indicate the voltage value in float.

## **wlsxTrapStationBlackListReason**

Syntax	ArubaBlackListReason
Max-Access	accessible-for-notify
Status	current
Description	The reason for which a station is black listed.

## **wlsxTrapSpoofedIpAddress**

Syntax	IpAddress
Max-Access	accessible-for-notify
Status	current
Description	This object is used in a trap to identify a spoofed IP address.

## **wlsxTrapSpoofedOldPhyAddress**

Syntax	MacAddress
Max-Access	accessible-for-notify
Status	current
Description	This object is used in a trap to identify an old MAC address.

## **wlsxTrapSpoofedNewPhyAddress**

Syntax	MacAddress
Max-Access	accessible-for-notify
Status	current
Description	This object is used in a trap to identify a new MAC address.

## **wlsxTrapDBName**

Syntax	DisplayString(Size(0..64))
Max-Access	accessible-for-notify
Status	current
Description	This object is used in a trap to identify the name of the database.

## **wlsxTrapDBUserName**

Syntax	DisplayString(Size(0..64))
Max-Access	accessible-for-notify
Status	current
Description	This object is used in a trap to identify the name of the database user.

## **wlsxTrapDBIpAddress**

Syntax	DisplayString(Size(0..64))
Max-Access	accessible-for-notify
Status	current
Description	This object is used in a trap to identify the IP address of the database.

## **wlsxTrapDBType**

Syntax	ArubaDBType
Max-Access	accessible-for-notify
Status	current
Description	This object is used in a trap to identify the port of the user.

## **wlsxTrapVrrpID**

Syntax	Integer32
Max-Access	accessible-for-notify
Status	current
Description	This object contains the virtual router identifier.

## **wlsxTrapVrrpMasterIp**

Syntax	IpAddress
Max-Access	accessible-for-notify
Status	current
Description	This object contains the master IP address.

## **wlsxTrapVrrpOperState**

Syntax	ArubaVrrpState
Max-Access	accessible-for-notify
Status	current
Description	This object represents the VRRP operational state.

## **wlsxTrapESIServerGrpName**

Syntax	DisplayString(Size(0..64))
Max-Access	accessible-for-notify
Status	current
Description	This object represents the External Services Interface (ESI) server group name.

## **wlsxTrapESIServerName**

Syntax	DisplayString(Size(0..64))
Max-Access	accessible-for-notify
Status	current
Description	This object represents the External Services Interface (ESI) server name.

## **wlsxTrapESIServerIpAddress**

Syntax	IpAddress
Max-Access	accessible-for-notify
Status	current
Description	This object represents the External Services Interface (ESI) server IP address.

## **wlsxTrapLicenseDaysRemaining**

Syntax	Integer32
Max-Access	accessible-for-notify
Status	current
Description	This object represents the number of days remaining prior to a license expiry.

## **wlsxTrapSwitchIp**

Syntax	IpAddress
Max-Access	accessible-for-notify
Status	current
Description	This object represents the controller IP address.

## **wlsxTrapSwitchRole**

Syntax	ArubaSwitchRole
Max-Access	accessible-for-notify
Status	current
Description	This object represents the role of the controller.

## **wlsxTrapUserIpAddress**

Syntax	IpAddress
Max-Access	accessible-for-notify
Status	current
Description	This object represents the IP address of the user.

## **wlsxTrapUserPhyAddress**

Syntax	MacAddress
Max-Access	accessible-for-notify
Status	current
Description	This object represents the MAC address of the user.

## **wlsxTrapUserName**

Syntax	DisplayString(Size(0..64))
Max-Access	accessible-for-notify
Status	current
Description	This object represents the user name.

## **wlsxTrapUserRole**

Syntax	DisplayString(Size(0..64))
Max-Access	accessible-for-notify
Status	current
Description	This object represents the Authentication method of the user.

## **wlsxTrapUserAuthenticationMethod**

Syntax	ArubaAuthenticationMethods
Max-Access	accessible-for-notify
Status	current
Description	This object represents the Authentication method of the user.

## **wlsxTrapAPRadioNumber**

Syntax	Integer32
Max-Access	accessible-for-notify
Status	current
Description	This object represents the radio number.

## **wlsxTrapRogueInfoURL**

Syntax	DisplayString(Size(0..64))
Max-Access	accessible-for-notify
Status	current
Description	This object is used to point to the WEBGUI Rogue AP information URL.

## **wlsxTrapInterferingAPInfoURL**

Syntax	DisplayString(Size(0..64))
Max-Access	accessible-for-notify
Status	current
Description	This object is used to point to the WEBGUI Rogue interfering access point information URL.

## **wlsxTrapPortNumber**

Syntax	Integer32
Max-Access	accessible-for-notify
Status	current
Description	This object is used in the traps to indicate the port number.

## **wlsxTrapTime**

Syntax	DateAndTime
Max-Access	accessible-for-notify
Status	current
Description	This object is used in all the enterprise traps to indicate the time when the trap is generated on the controller.

## **wlsxTrapHostIp**

Syntax	IpAddress
Max-Access	accessible-for-notify
Status	current
Description	This object represents the trap host.

## **wlsxTrapHostPort**

Syntax	Integer32
Max-Access	accessible-for-notify
Status	current
Description	This object represents the trap host port.

## **wlsxTrapConfigurationId**

Syntax	Integer32
Max-Access	accessible-for-notify
Status	current
Description	This object represents the ID of the configuration, to be used in traps.

## **wlsxTrapCTSURL**

Syntax	DisplayString(Size(0..64))
Max-Access	accessible-for-notify
Status	current
Description	This object represents the URL from which the transfer should happen.

## **wlsxTrapCTSTransferType**

Syntax	DisplayString(Size(0..64))
Max-Access	accessible-for-notify
Status	current
Description	This object represents the transfer type, upload or download.

## **wlsxTrapConfigurationState**

Syntax	ArubaConfigurationState (INTEGER)
Max-Access	accessible-for-notify
Status	current
Description	This object represents the state of the configuration transfer.

## **wlsxTrapUpdateFailureReason**

Syntax	DisplayString(Size(0..64))
Max-Access	accessible-for-notify
Status	current
Description	This object represents the reason for the update failure.

## **wlsxTrapUpdateFailedObj**

Syntax	DisplayString(Size(0..64))
Max-Access	accessible-for-notify
Status	current
Description	This variable represents the AMAPI object which is the reason for the update failure.
History	Added in ArubaOS 3.1.0.0.

## wlsxTrapTableEntryChangeType

Syntax	ArubaConfigurationChangeType (INTEGER)
Max-Access	accessible-for-notify
Status	current
Description	This object represents the type of the configuration change.

## wlsxTrapGlobalConfigObj

Syntax	DisplayString(Size(0..64))
Max-Access	accessible-for-notify
Status	current
Description	This variable represents the AMAPI object corresponding to the global configuration change.

## wlsxTrapTableGenNumber

Syntax	Integer32
Max-Access	accessible-for-notify
Status	current
Description	This object represents the generation number of a table.

## wlsxTrapLicenseId

Syntax	Integer32
Max-Access	accessible-for-notify
Status	current
Description	This object is used in the traps to indicate the license ID.

## wlsxTrapConfidenceLevel

Syntax	Integer32
Max-Access	accessible-for-notify
Status	current
Description	This object is used in the traps to indicate the confidence level as a percentage.

## wlsxTrapMissingLicenses

Syntax	DisplayString(Size(0..64))
Max-Access	accessible-for-notify
Status	current
Description	This variable indicates any licenses that are not present during a configuration update.

## **wlsxVoiceCurrentNumCdr**

Syntax	Integer32
Max-Access	accessible-for-notify
Status	current
Description	This object represents the number of CDRs in buffer.
History	Added in ArubaOS 3.1.0.0.

## **wlsxTrapTunnelId**

Syntax	Integer32
Max-Access	accessible-for-notify
Status	current
Description	This object represents the tunnel ID.

## **wlsxTrapTunnelStatus**

Syntax	Integer32
Max-Access	accessible-for-notify
Status	current
Description	This object represents the tunnel status.

## **wlsxTrapTunnelUpReason**

Syntax	DisplayString(Size(0..64))
Max-Access	accessible-for-notify
Status	current
Description	This object represents the tunnel up reason.

## **wlsxTrapTunnelDownReason**

Syntax	DisplayString(Size(0..64))
Max-Access	accessible-for-notify
Status	current
Description	This object represents the tunnel down reason.

## **wlsxTrapApSerialNumber**

Syntax	DisplayString(Size(0..64))
Max-Access	accessible-for-notify
Status	current
Description	This object represents the AP serial number.



## **wlsxTraptimeStr**

Syntax	DisplayString(Size(0..64))
Max-Access	accessible-for-notify
Status	current
Description	This object represents the Time in String format.

## **wlsxTrapMasterIp**

Syntax	IpAddress
Max-Access	accessible-for-notify
Status	current
Description	This object represents the master IP address.

## **wlsxTrapLocalIp**

Syntax	IpAddress
Max-Access	accessible-for-notify
Status	current
Description	This object represents the local IP address.

## **wlsxTrapMasterName**

Syntax	DisplayString(Size(0..64))
Max-Access	accessible-for-notify
Status	current
Description	This object represents the master controller name.
History	Added in ArubaOS 3.4.1

## **wlsxTrapLocalName**

Syntax	DisplayString(Size(0..64))
Max-Access	accessible-for-notify
Status	current
Description	This object represents the local controller name.

## **wlsxTrapPrimaryControllerIp**

Syntax	IpAddress
Max-Access	accessible-for-notify
Status	current
Description	This object represents the IP address of the AP's primary controller.

## **wlsxTrapBackupControllerIp**

Syntax	IpAddress
Max-Access	accessible-for-notify
Status	current
Description	This object represents the IP address of the AP's backup controller.

## **wlsxTrapSpoofedFrameType**

Syntax	DisplayString (SIZE(0..64))
Max-Access	accessible-for-notify
Status	current
Description	This object is used in the traps to indicate the Spoofed Frame Type

## **wlsxTrapAssociationType**

Syntax	DisplayString (SIZE(0..64))
Max-Access	accessible-for-notify
Status	current
Description	This object is used in the traps to indicate the type of association.

## **wlsxTrapDeviceIpAddress**

Syntax	IpAddress
Max-Access	accessible-for-notify
Status	current
Description	This object represents the IP address of a device seen by an AP.

## **wlsxTrapDeviceMac**

Syntax	MacAddress
Max-Access	accessible-for-notify
Status	current
Description	This object represents the MAC address of a device seen by an AP.

## **wlsxTrapVcIpAddress**

Syntax	IpAddress
Max-Access	accessible-for-notify
Status	current
Description	This object represents the Ip Address of a Voice client.

## **wlsxTrapVcMacAddress**

Syntax	MacAddress
Max-Access	accessible-for-notify
Status	current
Description	This object represents the MAC address of a Voice client.

## **wlsxTrapAPName**

Syntax	DisplayString (SIZE(0..64))
Max-Access	accessible-for-notify
Status	current
Description	This object is used in the traps to indicate the Name of the AP.

## **wlsxTrapApMode**

Syntax	Integer32
Max-Access	accessible-for-notify
Status	current
Description	This Object represents the AP Mode.

## **wlsxTrapAPPrevChannel**

Syntax	Integer32
Max-Access	accessible-for-notify
Status	current
Description	This object is used in the traps to indicate the Previous Channel.

## **wlsxTrapAPPrevChannelSec**

Syntax	ArubaHTextChannel (INTEGER)
Max-Access	accessible-for-notify
Status	current
Description	This object is used in the traps to indicate the Previous Secondary Channel.

## **wlsxTrapAPPrevTxPower**

Syntax	Integer32
Max-Access	accessible-for-notify
Status	current
Description	This object is used in the traps to indicate previous AP Transmit Power.

## **wlsxTrapAPCurMode**

Syntax	ArubaAccessPointMode (INTEGER)
Max-Access	accessible-for-notify
Status	current
Description	This Object represents the APs Current Mode.

## **wlsxTrapAPPrevMode**

Syntax	ArubaAccessPointMode (INTEGER)
Max-Access	accessible-for-notify
Status	current
Description	This Object represents the APs Previous Mode.

## **wlsxTrapAPARMChangeReason**

Syntax	ArubaARMChangeReason (INTEGER)
Max-Access	accessible-for-notify
Status	current
Description	This Object represents the APs Previous Mode.

## **wlsxTrapAPChannelSec**

Syntax	ArubaHTextChannel (INTEGER)
Max-Access	accessible-for-notify
Status	current
Description	This object is used in the traps to indicate the Current Secondary Channel.

## **wlsxTrapUserAttributeChangeType**

Syntax	ArubaConfigurationChangeType (INTEGER)
Max-Access	accessible-for-notify
Status	current
Description	This object represents type of the configuration change.

## **wlsxTrapAPControllerIp**

Syntax	IpAddress
Max-Access	accessible-for-notify
Status	current
Description	IP address of the controller to which the AP is (or was most recently) registered.

## **wlsxTrapApMasterStatus**

Syntax	ArubaAPMasterStatus (INTEGER)
Max-Access	accessible-for-notify
Status	current
Description	Status of the AP as seen by the master when the status changes.

## **wlsxTrapCaName**

Syntax	DisplayString (SIZE(0..64))
Max-Access	accessible-for-notify
Status	current
Description	This object is used in the traps to indicate the name of the trustpoint.

## **wlsxTrapCrlName**

Syntax	DisplayString (SIZE(0..64))
Max-Access	accessible-for-notify
Status	current
Description	This object is used in the traps to indicate the name of the crl.

## **wlsxTrapCount**

Syntax	Integer32
Max-Access	accessible-for-notify
Status	current
Description	This object represents the number of occurrence of this trap.

## **wlsxTrapAPPreviousUplinkType**

Syntax	ArubaAPUplinkType
Max-Access	accessible-for-notify
Status	current
Description	This object represents the previous uplink type of an AP.

## **wlsxTrapAPPreviousUplinkActiveTime**

Syntax	TimeTicks
Max-Access	accessible-for-notify
Status	current
Description	This object represents the active time of the previous uplink of an AP.

## **wlsxTrapAPActiveUplinkType**

Syntax	ArubaAPUplinkType
Max-Access	accessible-for-notify
Status	current
Description	This object represents the active uplink type of an AP.

## **wlsxTrapAPUplinkChangeReason**

Syntax	ArubaAPUplinkChangeReason
Max-Access	accessible-for-notify
Status	current
Description	This object represents the uplink change reason.

## ai Traps Definitions Group

**Table 11** *ai Traps Definitions Group OIDs*

Object	Object ID	
wlsxNUserEntryCreated	1.3.6.1.4.1.14823.2.3.3.1.200.2.1014	wlsxTrapDefinitionsGroup 1014
wlsxNUserEntryDeleted	1.3.6.1.4.1.14823.2.3.3.1.200.2.1015	wlsxTrapDefinitionsGroup 1015
wlsxNUserEntryAuthenticated	1.3.6.1.4.1.14823.2.3.3.1.200.2.1016	wlsxTrapDefinitionsGroup 1016
wlsxNUserEntryDeAuthenticated	1.3.6.1.4.1.14823.2.3.3.1.200.2.1017	wlsxTrapDefinitionsGroup 1017
wlsxNUserAuthenticationFailed	1.3.6.1.4.1.14823.2.3.3.1.200.2.1018	wlsxTrapDefinitionsGroup 1018
wlsxNAuthServerReqTimedOut	1.3.6.1.4.1.14823.2.3.3.1.200.2.1019	wlsxTrapDefinitionsGroup 1019
wlsxNAuthServerTimedOut	1.3.6.1.4.1.14823.2.3.3.1.200.2.1020	wlsxTrapDefinitionsGroup 1020
wlsxNAuthServerIsUp	1.3.6.1.4.1.14823.2.3.3.1.200.2.1021	wlsxTrapDefinitionsGroup 1021
wlsxNAccessPointsIsUp	1.3.6.1.4.1.14823.2.3.3.1.200.2.1040	wlsxTrapDefinitionsGroup 1040
wlsxNAccessPointsIsDown	1.3.6.1.4.1.14823.2.3.3.1.200.2.1041	wlsxTrapDefinitionsGroup 1041
wlsxNChannelChanged	1.3.6.1.4.1.14823.2.3.3.1.200.2.1043	wlsxTrapDefinitionsGroup 1043
wlsxNStationAddedToBlackList	1.3.6.1.4.1.14823.2.3.3.1.200.2.1044	wlsxTrapDefinitionsGroup 1044
wlsxNStationRemovedFromBlack List	1.3.6.1.4.1.14823.2.3.3.1.200.2.1045	wlsxTrapDefinitionsGroup 1045
wlsxNRadioAttributesChanged	1.3.6.1.4.1.14823.2.3.3.1.200.2.1049	wlsxTrapDefinitionsGroup 1049
wlsxUnsecureAPDetected	1.3.6.1.4.1.14823.2.3.3.1.200.2.1053	wlsxTrapDefinitionsGroup 1053
wlsxUnsecureAPResolved	1.3.6.1.4.1.14823.2.3.3.1.200.2.1054	wlsxTrapDefinitionsGroup 1054
wlsxStalmpersonation	1.3.6.1.4.1.14823.2.3.3.1.200.2.1055	wlsxTrapDefinitionsGroup 1055
wlsxReservedChannelViolation	1.3.6.1.4.1.14823.2.3.3.1.200.2.1056	wlsxTrapDefinitionsGroup 1056
wlsxValidSSIDViolation	1.3.6.1.4.1.14823.2.3.3.1.200.2.1057	wlsxTrapDefinitionsGroup 1057
wlsxChannelMisconfiguration	1.3.6.1.4.1.14823.2.3.3.1.200.2.1058	wlsxTrapDefinitionsGroup 1058

**Table 11** *ai Traps Definitions Group OIDs (Continued)*

<b>Object</b>	<b>Object ID</b>	
wlsxOUIMisconfiguration	1.3.6.1.4.1.14823.2.3.3.1.200.2.1059	wlsxTrapDefinitionsGroup 1059
wlsxSSIDMisconfiguration	1.3.6.1.4.1.14823.2.3.3.1.200.2.1060	wlsxTrapDefinitionsGroup 1060
wlsxShortPreambleMisconfiguration	1.3.6.1.4.1.14823.2.3.3.1.200.2.1061	wlsxTrapDefinitionsGroup 1061
wlsxWPAMisconfiguration	1.3.6.1.4.1.14823.2.3.3.1.200.2.1062	wlsxTrapDefinitionsGroup 1062
wlsxAdhocNetworkDetected	1.3.6.1.4.1.14823.2.3.3.1.200.2.1063	wlsxTrapDefinitionsGroup 1063
wlsxAdhocNetworkRemoved	1.3.6.1.4.1.14823.2.3.3.1.200.2.1064	wlsxTrapDefinitionsGroup 1064
wlsxStaPolicyViolation	1.3.6.1.4.1.14823.2.3.3.1.200.2.1065	wlsxTrapDefinitionsGroup 1065
wlsxRepeatWEPIVViolation	1.3.6.1.4.1.14823.2.3.3.1.200.2.1066	wlsxTrapDefinitionsGroup 1066
wlsxWeakWEPIVViolation	1.3.6.1.4.1.14823.2.3.3.1.200.2.1067	wlsxTrapDefinitionsGroup 1067
wlsxChannellInterferenceDetected	1.3.6.1.4.1.14823.2.3.3.1.200.2.1068	wlsxTrapDefinitionsGroup 1068
wlsxChannellInterferenceCleared	1.3.6.1.4.1.14823.2.3.3.1.200.2.1069	wlsxTrapDefinitionsGroup 1069
wlsxAPIInterferenceDetected	1.3.6.1.4.1.14823.2.3.3.1.200.2.1070	wlsxTrapDefinitionsGroup 1070
wlsxAPIInterferenceCleared	1.3.6.1.4.1.14823.2.3.3.1.200.2.1071	wlsxTrapDefinitionsGroup 1071
wlsxStaInterferenceDetected	1.3.6.1.4.1.14823.2.3.3.1.200.2.1072	wlsxTrapDefinitionsGroup 1072
wlsxStaInterferenceCleared	1.3.6.1.4.1.14823.2.3.3.1.200.2.1073	wlsxTrapDefinitionsGroup 1073
wlsxFrameRetryRateExceeded	1.3.6.1.4.1.14823.2.3.3.1.200.2.1074	wlsxTrapDefinitionsGroup 1074
wlsxFrameReceiveErrorRateExceeded	1.3.6.1.4.1.14823.2.3.3.1.200.2.1075	wlsxTrapDefinitionsGroup 1075
wlsxFrameFragmentationRateExceeded	1.3.6.1.4.1.14823.2.3.3.1.200.2.1076	wlsxTrapDefinitionsGroup 1076
wlsxFrameBandWidthRateExceeded	1.3.6.1.4.1.14823.2.3.3.1.200.2.1077	wlsxTrapDefinitionsGroup 1077
wlsxFrameLowSpeedRateExceeded	1.3.6.1.4.1.14823.2.3.3.1.200.2.1078	wlsxTrapDefinitionsGroup 1078
wlsxFrameNonUnicastRateExceeded	1.3.6.1.4.1.14823.2.3.3.1.200.2.1079	wlsxTrapDefinitionsGroup 1079



**Table 11** *ai Traps Definitions Group OIDs (Continued)*

<b>Object</b>	<b>Object ID</b>	
wlsxLoadbalancingEnabled	1.3.6.1.4.1.14823.2.3.3.1.200.2.1080	wlsxTrapDefinitionsGroup 1080
wlsxLoadbalancingDisabled	1.3.6.1.4.1.14823.2.3.3.1.200.2.1081	wlsxTrapDefinitionsGroup 1081
wlsxChannelFrameRetryRateExceeded	1.3.6.1.4.1.14823.2.3.3.1.200.2.1082	wlsxTrapDefinitionsGroup 1082
wlsxChannelFrameFragmentationRateExceeded	1.3.6.1.4.1.14823.2.3.3.1.200.2.1083	wlsxTrapDefinitionsGroup 1083
wlsxChannelFrameErrorRateExceeded	1.3.6.1.4.1.14823.2.3.3.1.200.2.1084	wlsxTrapDefinitionsGroup 1084
wlsxSignatureMatchAP	1.3.6.1.4.1.14823.2.3.3.1.200.2.1085	wlsxTrapDefinitionsGroup 1085
wlsxSignatureMatchSta	1.3.6.1.4.1.14823.2.3.3.1.200.2.1086	wlsxTrapDefinitionsGroup 1086
wlsxChannelRateAnomaly	1.3.6.1.4.1.14823.2.3.3.1.200.2.1087	wlsxTrapDefinitionsGroup 1087
wlsxNodeRateAnomaly	1.3.6.1.4.1.14823.2.3.3.1.200.2.1003	wlsxTrapDefinitionsGroup 1003
wlsxNodeRateAnomalyAP	1.3.6.1.4.1.14823.2.3.3.1.200.2.1088	wlsxTrapDefinitionsGroup 1088
wlsxNodeRateAnomalySta	1.3.6.1.4.1.14823.2.3.3.1.200.2.1089	wlsxTrapDefinitionsGroup 1089
wlsxEAPRateAnomaly	1.3.6.1.4.1.14823.2.3.3.1.200.2.1090	wlsxTrapDefinitionsGroup 1090
wlsxSignalAnomaly	1.3.6.1.4.1.14823.2.3.3.1.200.2.1091	wlsxTrapDefinitionsGroup 1091
wlsxSequenceNumberAnomalyAP	1.3.6.1.4.1.14823.2.3.3.1.200.2.1092	wlsxTrapDefinitionsGroup 1092
wlsxSequenceNumberAnomalySta	1.3.6.1.4.1.14823.2.3.3.1.200.2.1093	wlsxTrapDefinitionsGroup 1093
wlsxDisconnectStationAttack	1.3.6.1.4.1.14823.2.3.3.1.200.2.1094	wlsxTrapDefinitionsGroup 1094
wlsxApFloodAttack	1.3.6.1.4.1.14823.2.3.3.1.200.2.1095	wlsxTrapDefinitionsGroup 1095
wlsxAdhocNetwork	1.3.6.1.4.1.14823.2.3.3.1.200.2.1096	wlsxTrapDefinitionsGroup 1096
wlsxWirelessBridge	1.3.6.1.4.1.14823.2.3.3.1.200.2.1097	wlsxTrapDefinitionsGroup 1097
wlsxInvalidMacOUIAP	1.3.6.1.4.1.14823.2.3.3.1.200.2.1098	wlsxTrapDefinitionsGroup 1098
wlsxInvalidMacOUISta	1.3.6.1.4.1.14823.2.3.3.1.200.2.1099	wlsxTrapDefinitionsGroup 1099

**Table 11** *ai Traps Definitions Group OIDs (Continued)*

<b>Object</b>	<b>Object ID</b>	
wlsxWEPMisconfiguration	1.3.6.1.4.1.14823.2.3.3.1.200.2.1100	wlsxTrapDefinitionsGroup 1100
wlsxStaRepeatWEPIVViolation	1.3.6.1.4.1.14823.2.3.3.1.200.2.1101	wlsxTrapDefinitionsGroup 1101
wlsxStaWeakWEPIVViolation	1.3.6.1.4.1.14823.2.3.3.1.200.2.1102	wlsxTrapDefinitionsGroup 1102
wlsxStaAssociatedToUnsecureAP	1.3.6.1.4.1.14823.2.3.3.1.200.2.1103	wlsxTrapDefinitionsGroup 1103
wlsxStaUnAssociatedFromUnsecureAP	1.3.6.1.4.1.14823.2.3.3.1.200.2.1104	wlsxTrapDefinitionsGroup 1104
wlsxAdhocNetworkBridgeDetected	1.3.6.1.4.1.14823.2.3.3.1.200.2.1105	wlsxTrapDefinitionsGroup 1105
wlsxInterferingApDetected	1.3.6.1.4.1.14823.2.3.3.1.200.2.1106	wlsxTrapDefinitionsGroup 1106
wlsxColdStart	1.3.6.1.4.1.14823.2.3.3.1.200.2.1111	wlsxTrapDefinitionsGroup 1111
wlsxWarmStart	1.3.6.1.4.1.14823.2.3.3.1.200.2.1112	wlsxTrapDefinitionsGroup 1112
wlsxAPImpersonation	1.3.6.1.4.1.14823.2.3.3.1.200.2.1113	wlsxTrapDefinitionsGroup 1113
wlsxNAuthServerIsDown	1.3.6.1.4.1.14823.2.3.3.1.200.2.1115	wlsxTrapDefinitionsGroup 1115
wlsxWindowsBridgeDetected	1.3.6.1.4.1.14823.2.3.3.1.200.2.1129	wlsxTrapDefinitionsGroup 1129
wlsxSignAPNetstumbler	1.3.6.1.4.1.14823.2.3.3.1.200.2.1134	wlsxTrapDefinitionsGroup 1134
wlsxSignStaNetstumbler	1.3.6.1.4.1.14823.2.3.3.1.200.2.1135	wlsxTrapDefinitionsGroup 1135
wlsxSignAPAsleep	1.3.6.1.4.1.14823.2.3.3.1.200.2.1136	wlsxTrapDefinitionsGroup 1136
wlsxSignStaAsleep	1.3.6.1.4.1.14823.2.3.3.1.200.2.1137	wlsxTrapDefinitionsGroup 1137
wlsxSignAPAirjack	1.3.6.1.4.1.14823.2.3.3.1.200.2.1138	wlsxTrapDefinitionsGroup 1138
wlsxSignStaAirjack	1.3.6.1.4.1.14823.2.3.3.1.200.2.1139	wlsxTrapDefinitionsGroup 1139
wlsxSignAPNullProbeResp	1.3.6.1.4.1.14823.2.3.3.1.200.2.1140	wlsxTrapDefinitionsGroup 1140
wlsxSignStaNullProbeResp	1.3.6.1.4.1.14823.2.3.3.1.200.2.1141	wlsxTrapDefinitionsGroup 1141
wlsxSignAPDeathBcast	1.3.6.1.4.1.14823.2.3.3.1.200.2.1142	wlsxTrapDefinitionsGroup 1142

**Table 11** *ai Traps Definitions Group OIDs (Continued)*

<b>Object</b>	<b>Object ID</b>	
wlsxSignStaDeathBcast	1.3.6.1.4.1.14823.2.3.3.1.200.2.1143	wlsxTrapDefinitionsGroup 1143
wlsxWindowsBridgeDetectedAP	1.3.6.1.4.1.14823.2.3.3.1.200.2.1144	wlsxTrapDefinitionsGroup 1144
wlsxWindowsBridgeDetectedSta	1.3.6.1.4.1.14823.2.3.3.1.200.2.1145	wlsxTrapDefinitionsGroup 1145
wlsxAdhocNetworkBridgeDetectedAP	1.3.6.1.4.1.14823.2.3.3.1.200.2.1146	wlsxTrapDefinitionsGroup 1146
wlsxAdhocNetworkBridgeDetectedSta	1.3.6.1.4.1.14823.2.3.3.1.200.2.1147	wlsxTrapDefinitionsGroup 1147
wlsxDisconnectStationAttackAP	1.3.6.1.4.1.14823.2.3.3.1.200.2.1148	wlsxTrapDefinitionsGroup 1148
wlsxDisconnectStationAttackSta	1.3.6.1.4.1.14823.2.3.3.1.200.2.1149	wlsxTrapDefinitionsGroup 1149
wlsxSuspectUnsecureAPDetected	1.3.6.1.4.1.14823.2.3.3.1.200.2.1150	wlsxTrapDefinitionsGroup 1150
wlsxSuspectUnsecureAPResolved	1.3.6.1.4.1.14823.2.3.3.1.200.2.1151	wlsxTrapDefinitionsGroup 1151
wlsxHtGreenfieldSupported	1.3.6.1.4.1.14823.2.3.3.1.200.2.1157	wlsxTrapDefinitionsGroup 1157
wlsxHT40MHzIntoleranceAP	1.3.6.1.4.1.14823.2.3.3.1.200.2.1158	wlsxTrapDefinitionsGroup 1158
wlsxHT40MHzIntoleranceSta	1.3.6.1.4.1.14823.2.3.3.1.200.2.1159	wlsxTrapDefinitionsGroup 1159
wlsxNAdhocNetwork	1.3.6.1.4.1.14823.2.3.3.1.200.2.1161	wlsxTrapDefinitionsGroup 1161
wlsxNAdhocNetworkBridgeDetectedAP	1.3.6.1.4.1.14823.2.3.3.1.200.2.1162	wlsxTrapDefinitionsGroup 1162
wlsxNAdhocNetworkBridgeDetectedSta	1.3.6.1.4.1.14823.2.3.3.1.200.2.1163	wlsxTrapDefinitionsGroup 1163
wlsxClientFloodAttack	1.3.6.1.4.1.14823.2.3.3.1.200.2.1170	wlsxTrapDefinitionsGroup 1170
wlsxValidClientNotUsingEncryption	1.3.6.1.4.1.14823.2.3.3.1.200.2.1171	wlsxTrapDefinitionsGroup 1171
wlsxAdhocUsingValidSSID	1.3.6.1.4.1.14823.2.3.3.1.200.2.1172	wlsxTrapDefinitionsGroup 1172
wlsxAPspoofingDetected	1.3.6.1.4.1.14823.2.3.3.1.200.2.1173	wlsxTrapDefinitionsGroup 1173
wlsxClientAssociatingOnWrongChannel	1.3.6.1.4.1.14823.2.3.3.1.200.2.1174	wlsxTrapDefinitionsGroup 1174
wlsxNDisconnectStationAttack	1.3.6.1.4.1.14823.2.3.3.1.200.2.1175	wlsxTrapDefinitionsGroup 1175

**Table 11** *ai Traps Definitions Group OIDs (Continued)*

<b>Object</b>	<b>Object ID</b>	
wlsxNStaUnAssociatedFromUnsecureAP	1.3.6.1.4.1.14823.2.3.3.1.200.2.1176	wlsxTrapDefinitionsGroup 1176
wlsxOmertaAttack	1.3.6.1.4.1.14823.2.3.3.1.200.2.1177	wlsxTrapDefinitionsGroup 1177
wlsxTKIPReplayAttack	1.3.6.1.4.1.14823.2.3.3.1.200.2.1178	wlsxTrapDefinitionsGroup 1178
wlsxChopChopAttack	1.3.6.1.4.1.14823.2.3.3.1.200.2.1179	wlsxTrapDefinitionsGroup 1179
wlsxFataJackAttack	1.3.6.1.4.1.14823.2.3.3.1.200.2.1180	wlsxTrapDefinitionsGroup 1180
wlsxInvalidAddressCombination	1.3.6.1.4.1.14823.2.3.3.1.200.2.1181	wlsxTrapDefinitionsGroup 1181
wlsxValidClientMisassociation	1.3.6.1.4.1.14823.2.3.3.1.200.2.1182	wlsxTrapDefinitionsGroup 1182
wlsxMalformedHTIEDetected	1.3.6.1.4.1.14823.2.3.3.1.200.2.1183	wlsxTrapDefinitionsGroup 1183
wlsxMalformedAssocReqDetected	1.3.6.1.4.1.14823.2.3.3.1.200.2.1184	wlsxTrapDefinitionsGroup 1184
wlsxOverflowIEDetected	1.3.6.1.4.1.14823.2.3.3.1.200.2.1185	wlsxTrapDefinitionsGroup 1185
wlsxOverflowEAPOLKeyDetected	1.3.6.1.4.1.14823.2.3.3.1.200.2.1186	wlsxTrapDefinitionsGroup 1186
wlsxMalformedFrameLargeDurationDetected	1.3.6.1.4.1.14823.2.3.3.1.200.2.1187	wlsxTrapDefinitionsGroup 1187
wlsxMalformedFrameWrongChannelDetected	1.3.6.1.4.1.14823.2.3.3.1.200.2.1188	wlsxTrapDefinitionsGroup 1188
wlsxMalformedAuthFrame	1.3.6.1.4.1.14823.2.3.3.1.200.2.1189	wlsxTrapDefinitionsGroup 1189
wlsxCTSRateAnomaly	1.3.6.1.4.1.14823.2.3.3.1.200.2.1190	wlsxTrapDefinitionsGroup 1190
wlsxRTSRateAnomaly	1.3.6.1.4.1.14823.2.3.3.1.200.2.1191	wlsxTrapDefinitionsGroup 1191
wlsxNRogueAPDetected	1.3.6.1.4.1.14823.2.3.3.1.200.2.1192	wlsxTrapDefinitionsGroup 1192
wlsxNRogueAPResolved	1.3.6.1.4.1.14823.2.3.3.1.200.2.1193	wlsxTrapDefinitionsGroup 1193
wlsxNeighborAPDetected	1.3.6.1.4.1.14823.2.3.3.1.200.2.1194	wlsxTrapDefinitionsGroup 1194
wlsxNInterferingAPDetected	1.3.6.1.4.1.14823.2.3.3.1.200.2.1195	wlsxTrapDefinitionsGroup 1195
wlsxNSuspectRogueAPDetected	1.3.6.1.4.1.14823.2.3.3.1.200.2.1196	wlsxTrapDefinitionsGroup 1196

**Table 11** *ai Traps Definitions Group OIDs (Continued)*

<b>Object</b>	<b>Object ID</b>	
wlsxNSuspectRogueAPResolved	1.3.6.1.4.1.14823.2.3.3.1.200.2.1197	wlsxTrapDefinitionsGroup 1197
wlsxBlockAckAttackDetected	1.3.6.1.4.1.14823.2.3.3.1.200.2.1198	wlsxTrapDefinitionsGroup 1198
wlsxHotspotterAttackDetected	1.3.6.1.4.1.14823.2.3.3.1.200.2.1199	wlsxTrapDefinitionsGroup 1199
wlsxNSignatureMatch	1.3.6.1.4.1.14823.2.3.3.1.200.2.1200	wlsxTrapDefinitionsGroup 1200
wlsxNSignatureMatchNetstumbler	1.3.6.1.4.1.14823.2.3.3.1.200.2.1201	wlsxTrapDefinitionsGroup 1201
wlsxNSignatureMatchAsleep	1.3.6.1.4.1.14823.2.3.3.1.200.2.1202	wlsxTrapDefinitionsGroup 1202
wlsxNSignatureMatchAirjack	1.3.6.1.4.1.14823.2.3.3.1.200.2.1203	wlsxTrapDefinitionsGroup 1203
wlsxNSignatureMatchNullProbeResp	1.3.6.1.4.1.14823.2.3.3.1.200.2.1204	wlsxTrapDefinitionsGroup 1204
wlsxNSignatureMatchDeathBcast	1.3.6.1.4.1.14823.2.3.3.1.200.2.1205	wlsxTrapDefinitionsGroup 1205
wlsxNSignatureMatchDisassocBcast	1.3.6.1.4.1.14823.2.3.3.1.200.2.1206	wlsxTrapDefinitionsGroup 1206
wlsxNSignatureMatchWellenreiter	1.3.6.1.4.1.14823.2.3.3.1.200.2.1207	wlsxTrapDefinitionsGroup 1207
wlsxAPDeathContainment	1.3.6.1.4.1.14823.2.3.3.1.200.2.1208	wlsxTrapDefinitionsGroup 1208
wlsxClientDeathContainment	1.3.6.1.4.1.14823.2.3.3.1.200.2.1209	wlsxTrapDefinitionsGroup 1209
wlsxAPWiredContainment	1.3.6.1.4.1.14823.2.3.3.1.200.2.1210	wlsxTrapDefinitionsGroup 1210
wlsxClientWiredContainment	1.3.6.1.4.1.14823.2.3.3.1.200.2.1211	wlsxTrapDefinitionsGroup 1211
wlsxAPTaggedWiredContainment	1.3.6.1.4.1.14823.2.3.3.1.200.2.1212	wlsxTrapDefinitionsGroup 1212
wlsxClientTaggedWiredContainment	1.3.6.1.4.1.14823.2.3.3.1.200.2.1213	wlsxTrapDefinitionsGroup 1213
wlsxTarpitContainment	1.3.6.1.4.1.14823.2.3.3.1.200.2.1214	wlsxTrapDefinitionsGroup 1214
wlsxAPChannelChange	1.3.6.1.4.1.14823.2.3.3.1.200.2.1216	wlsxTrapDefinitionsGroup 1216
wlsxAPPowerChange	1.3.6.1.4.1.14823.2.3.3.1.200.2.1217	wlsxTrapDefinitionsGroup 1217
wlsxAPModeChange	1.3.6.1.4.1.14823.2.3.3.1.200.2.1218	wlsxTrapDefinitionsGroup 1218

**Table 11** *ai Traps Definitions Group OIDs (Continued)*

Object	Object ID	
wlsxUserEntryAttributesChanged	1.3.6.1.4.1.14823.2.3.3.1.200.2.1219	wlsxTrapDefinitionsGroup 1219
wlsxPowerSaveDosAttack	1.3.6.1.4.1.14823.2.3.3.1.200.2.1220	wlsxTrapDefinitionsGroup 1220
wlsxNAPMasterStatusChange	1.3.6.1.4.1.14823.2.3.3.1.200.2.1221	wlsxTrapDefinitionsGroup 1221
wlsxNAdhocUsingValidSSID	1.3.6.1.4.1.14823.2.3.3.1.200.2.1222	wlsxTrapDefinitionsGroup 1222
wlsxMgmtUserAuthenticationFailed	1.3.6.1.4.1.14823.2.3.3.1.200.2.1224	wlsxTrapDefinitionsGroup 1224

**wlsxNUserEntryCreated**

Objects	wlsxTrapTime, wlsxTrapUserIpAddress, wlsxTrapUserPhyAddress
Status	current
Description	This trap indicates that a new user was created.

**wlsxNUserEntryDeleted**

Objects	wlsxTrapTime, wlsxTrapUserIpAddress, wlsxTrapUserPhyAddress
Status	current
Description	This trap indicates that a user was deleted.

**wlsxNUserEntryAuthenticated**

Objects	wlsxTrapTime, wlsxTrapUserIpAddress, wlsxTrapUserPhyAddress, wlsxTrapUserName, wlsxTrapUserAuthenticationMethod, wlsxTrapUserRole
Status	current
Description	This trap indicates that a user is Authenticated.

**wlsxNUserEntryDeAuthenticated**

Objects	wlsxTrapTime, wlsxTrapUserIpAddress, wlsxTrapUserPhyAddress
Status	current
Description	This trap indicates that a user is Deauthenticated.

**wlsxNUserAuthenticationFailed**

Objects	wlsxTrapTime, wlsxTrapUserIpAddress, wlsxTrapUserPhyAddress
Status	current
Description	This trap indicates that a user authentication has failed.

## **wlsxNAuthServerReqTimedOut**

Objects	wlsxTrapTime, wlsxTrapAuthServerName
Status	current
Description	This trap indicates that the authentication server request timed out.

## **wlsxNAuthServerTimedOut**

Objects	wlsxTrapTime, wlsxTrapAuthServerName, wlsxTrapAuthServerTimeout
Status	current
Description	This trap indicates that the authentication server timed out.

## **wlsxNAuthServerIsUp**

Objects	wlsxTrapTime, wlsxTrapAuthServerName
Status	current
Description	This trap indicates that an authentication server is up.

## **wlsxNAccessPointIsUp**

Objects	wlsxTrapTime, wlsxTrapAPMacAddress
Status	current
Description	A Trap which indicates that an access point up.

## **wlsxNAccessPointIsDown**

Objects	wlsxTrapTime, wlsxTrapAPMacAddress
Status	current
Description	A Trap which indicates that an access point down.

## **wlsxNChannelChanged**

Objects	wlsxTrapTime, wlsxTrapAPBSSID, wlsxTrapAPLocation, wlsxTrapAPChannel
Status	current
Description	This trap indicates that an access point at Location wlsxTrapAPLocation has changed the channel.

## **wlsxNStationAddedToBlackList**

Objects	wlsxTrapTime, wlsxTrapNodeMac, wlsxTrapStationBlackListReason
Status	current
Description	This trap indicates that the station is black listed.

## wlsxNStationRemovedFromBlackList

Objects	wlsxTrapTime, wlsxTrapNodeMac
Status	current
Description	This trap indicates that the station is removed from the black list. the frame type.

## wlsxNRadioAttributesChanged

Objects	{ wlsxTrapTime, wlsxTrapAPMacAddress, wlsxTrapAPRadioNumber, wlsxTrapAPIpAddress, wlsxTrapAPChannel, wlsxTrapAPTxFPower }
Status	current
Description	A Trap which indicates changes in the Radio attributes of an access point.

## wlsxUnsecureAPDetected

Objects	{wlsxTrapTime, wlsxTrapTargetAPBSSID, wlsxTrapTargetAPSSID, wlsxTrapAPMacAddress, wlsxTrapAPRadioNumber, wlsxTrapAPLocation, wlsxTrapAPChannel, wlsxTrapMatchedMac, wlsxTrapMatchedIp, wlsxTrapRogueInfoURL}
Status	current
Description	This trap indicates that an unauthorized access point is connected to the wired network. The access point is declared Rogue because it was matched to a MAC address.

## wlsxUnsecureAPResolved

Objects	{ wlsxTrapTime, wlsxTrapTargetAPBSSID, wlsxTrapTargetAPSSID, wlsxTrapAPMacAddress, wlsxTrapAPRadioNumber, wlsxTrapAPLocation, wlsxTrapAPChannel }
Status	current
Description	This trap indicates that a previously detected access point, classified as Rogue, is no longer present in the network.

## wlsxStalImpersonation

Objects	{ wlsxTrapTime, wlsxTrapNodeMac, wlsxTrapAPMacAddress, wlsxTrapAPRadioNumber, wlsxTrapAPLocation }
Status	current
Description	This trap indicates that an AM detected Station Impersonation.

## wlsxReservedChannelViolation

Objects	{wlsxTrapTime, wlsxTrapTargetAPBSSID, wlsxTrapTargetAPSSID, wlsxTrapAPMacAddress, wlsxTrapAPRadioNumber, wlsxTrapAPLocation, wlsxTrapAPChannel }
Status	current
Description	This trap indicates that an AM detected an access point which is violating the Reserved Channel configuration.



## wlsxValidSSIDViolation

Objects	{ wlsxTrapTime, wlsxTrapTargetAPBSSID, wlsxTrapTargetAPSSID, wlsxTrapAPMacAddress, wlsxTrapAPRadioNumber, wlsxTrapAPLocation, wlsxTrapAPChannel }
Status	current
Description	This trap indicates that an AP has detected an access point is violating Valid SSID configuration by using an SSID that is reserved for use by a valid AP only.

## wlsxChannelMisconfiguration

Objects	{ wlsxTrapTime, wlsxTrapTargetAPBSSID, wlsxTrapTargetAPSSID, wlsxTrapAPMacAddress, wlsxTrapAPRadioNumber, wlsxTrapAPLocation, wlsxTrapAPChannel }
Status	current
Description	This trap indicates that an AP detected an access point that has a channel misconfiguration because it is using a channel that is not valid.

## wlsxOUIMisconfiguration

Objects	{ wlsxTrapTime, wlsxTrapTargetAPBSSID, wlsxTrapTargetAPSSID, wlsxTrapAPMacAddress, wlsxTrapAPRadioNumber, wlsxTrapAPLocation, wlsxTrapAPChannel }
Status	current
Description	This trap indicates that an AP detected an access point that has an OUI misconfiguration because it is using an OUI that is not valid.

## wlsxSSIDMisconfiguration

Objects	{ wlsxTrapTime, wlsxTrapTargetAPBSSID, wlsxTrapTargetAPSSID, wlsxTrapAPMacAddress, wlsxTrapAPRadioNumber, wlsxTrapAPLocation, wlsxTrapAPChannel }
Status	current
Description	This trap indicates that an AP detected an access point that has an SSID misconfiguration because it is using an SSID that is not valid.

## wlsxShortPreambleMisconfiguration

Objects	{ wlsxTrapTime, wlsxTrapTargetAPBSSID, wlsxTrapTargetAPSSID, wlsxTrapAPMacAddress, wlsxTrapAPRadioNumber, wlsxTrapAPLocation, wlsxTrapAPChannel }
Status	current
Description	This trap indicates that an access point has bad Short preamble configuration.

## wlsxWPAMisconfiguration

Objects	{ wlsxTrapTime, wlsxTrapTargetAPBSSID, wlsxTrapTargetAPSSID, wlsxTrapAPMacAddress, wlsxTrapAPRadioNumber, wlsxTrapAPLocation, wlsxTrapAPChannel }
Status	current
Description	This trap indicates that an AP detected an access point that is misconfigured because it is not using WPA.

## **wlsxAdhocNetworkDetected**

Objects	{wlsxTrapTime, wlsxTrapTargetAPBSSID, wlsxTrapTargetAPSSID, wlsxTrapAPMacAddress, wlsxTrapAPRadioNumber, wlsxTrapAPLocation, wlsxTrapAPChannel }
Status	current
Description	This trap indicates that an AM has detected an Ad hoc network.

## **wlsxAdhocNetworkRemoved**

Objects	{wlsxTrapTime, wlsxTrapTargetAPBSSID, wlsxTrapTargetAPSSID, wlsxTrapAPMacAddress, wlsxTrapAPRadioNumber, wlsxTrapAPLocation, wlsxTrapAPChannel }
Status	current
Description	This trap indicates that a previously detected Ad hoc Network is no longer present in the network.

## **wlsxStaPolicyViolation**

Objects	{wlsxTrapTime, wlsxTrapTargetAPBSSID, wlsxTrapNodeMac, wlsxTrapAPMacAddress, wlsxTrapAPRadioNumber, wlsxTrapAPLocation, wlsxTrapAPChannel }
Status	current
Description	This trap indicates that Protection was enforced because a valid station's association to a non-valid access point violated Valid Station policy. For more info check: <a href="http://www.wve.org/entries/show/WVE-2005-0008">http://www.wve.org/entries/show/WVE-2005-0008</a> <a href="http://www.wve.org/entries/show/WVE-2005-0019">http://www.wve.org/entries/show/WVE-2005-0019</a> .

## **wlsxRepeatWEPIVViolation**

Objects	{wlsxTrapTime, wlsxTrapTargetAPBSSID, wlsxTrapTargetAPSSID, wlsxTrapAPMacAddress, wlsxTrapAPRadioNumber, wlsxTrapAPLocation, wlsxTrapAPChannel }
Status	current
Description	This trap indicates that an AP detected that a valid access point is using the same WEP initialization vector in consecutive packets.

## **wlsxWeakWEPIVViolation**

Objects	{wlsxTrapTime, wlsxTrapTargetAPBSSID, wlsxTrapTargetAPSSID, wlsxTrapAPMacAddress, wlsxTrapAPRadioNumber, wlsxTrapAPLocation, wlsxTrapAPChannel }
Status	current
Description	This trap indicates that an AP detected that a valid access point is using a Weak WEP initialization vector. For more info check: <a href="http://www.wve.org/entries/show/WVE-2005-0021">http://www.wve.org/entries/show/WVE-2005-0021</a>

## **wlsxChannelInterferenceDetected**

Objects	{wlsxTrapTime, wlsxTrapAPMacAddress, wlsxTrapAPRadioNumber, wlsxTrapAPLocation, wlsxTrapAPChannel }
Status	current
Description	This trap indicates that an AP has detected channel interference.

## **wlsxChannelInterferenceCleared**

Objects	{wlsxTrapTime, wlsxTrapAPMacAddress, wlsxTrapAPRadioNumber, wlsxTrapAPLocation, wlsxTrapAPChannel }
Status	current
Description	This trap indicates that a previously detected channel interference is no longer present.

## **wlsxAPInterferenceDetected**

Objects	{wlsxTrapTime, wlsxTrapTargetAPBSSID, wlsxTrapTargetAPSSID, wlsxTrapAPMacAddress, wlsxTrapAPRadioNumber, wlsxTrapAPLocation, wlsxTrapAPChannel }
Status	current
Description	This trap indicates that an AP has detected interference for an access point.

## **wlsxAPInterferenceCleared**

Objects	{wlsxTrapTime, wlsxTrapTargetAPBSSID, wlsxTrapTargetAPSSID, wlsxTrapAPMacAddress, wlsxTrapAPRadioNumber, wlsxTrapAPLocation, wlsxTrapAPChannel }
Status	current
Description	This trap indicates that the previously detected interference for an access point is no longer present.

## **wlsxStalInterferenceDetected**

Objects	{wlsxTrapTime, wlsxTrapTargetAPBSSID, wlsxTrapTargetAPSSID, wlsxTrapAPMacAddress, wlsxTrapAPRadioNumber, wlsxTrapNodeMac, wlsxTrapAPLocation, wlsxTrapAPChannel }
Status	current
Description	This trap indicates that an AP has detected interference for a station.

## **wlsxStalInterferenceCleared**

Objects	{wlsxTrapTime, wlsxTrapTargetAPBSSID, wlsxTrapTargetAPSSID, wlsxTrapAPMacAddress, wlsxTrapAPRadioNumber, wlsxTrapNodeMac, wlsxTrapAPLocation, wlsxTrapAPChannel }
Status	current
Description	This trap indicates that the previously detected interference for a station is no longer present.

## **wlsxFrameRetryRateExceeded**

Objects	{wlsxTrapTime, wlsxTrapTargetAPBSSID, wlsxTrapTargetAPSSID, wlsxTrapAPMacAddress, wlsxTrapAPRadioNumber, wlsxTrapAPLocation, wlsxTrapAPChannel }
Status	current
Description	This trap indicates that an AP detected that an access point has exceeded the configured upper threshold for Frame Retry Rate.

## **wlsxFramReceiveErrorRateExceeded**

Objects	{ wlsxTrapTime, wlsxTrapTargetAPBSSID, wlsxTrapTargetAPSSID, wlsxTrapAPMacAddress, wlsxTrapAPRadioNumber, wlsxTrapTargetAPChannel, wlsxTrapAPLocation }
Status	current
Description	This trap indicates that an AP detected that an access point has exceeded the configured upper threshold for Frame Receive Error Rate.

## **wlsxFramFragmentationRateExceeded**

Objects	{ wlsxTrapTime, wlsxTrapTargetAPBSSID, wlsxTrapTargetAPSSID, wlsxTrapAPMacAddress, wlsxTrapAPRadioNumber, wlsxTrapTargetAPChannel, wlsxTrapAPLocation }
Status	current
Description	This trap indicates that an AP detected that an access point exceeded the configured upper threshold for Frame Fragmentation Rate.

## **wlsxFramBandWidthRateExceeded**

Objects	{ wlsxTrapTime, wlsxTrapNodeMac, wlsxTrapTargetAPBSSID, wlsxTrapTargetAPSSID, wlsxTrapAPMacAddress, wlsxTrapAPRadioNumber, wlsxTrapAPLocation, wlsxTrapAPChannel }
Status	current
Description	This trap indicates that an AP detected that a station or access point has exceeded the configured upper threshold for Bandwidth rate.

## **wlsxFramLowSpeedRateExceeded**

Objects	{ wlsxTrapTime, wlsxTrapNodeMac, wlsxTrapTargetAPBSSID, wlsxTrapTargetAPSSID, wlsxTrapAPMacAddress, wlsxTrapAPRadioNumber, wlsxTrapAPLocation, wlsxTrapAPChannel }
Status	current
Description	This trap indicates that an AP detected that a station has exceeded the configured upper threshold for Low speed rate.

## **wlsxFramNonUnicastRateExceeded**

Objects	{ wlsxTrapTime, wlsxTrapNodeMac, wlsxTrapTargetAPBSSID, wlsxTrapTargetAPSSID, wlsxTrapAPMacAddress, wlsxTrapAPRadioNumber, wlsxTrapAPLocation, wlsxTrapAPChannel }
Status	current
Description	This trap indicates that an AP detected that station has exceeded the configured upper threshold for Non Unicast traffic rate.

## **wlsxLoadbalancingEnabled**

Objects	{ wlsxTrapTime, wlsxTrapTargetAPBSSID, wlsxTrapTargetAPSSID, wlsxTrapAPMacAddress, wlsxTrapAPRadioNumber, wlsxTrapAPLocation, wlsxTrapAPChannel }
Status	current
Description	This trap indicates that an AM is reporting that an AP has enabled Load balancing.

## **wlsxLoadbalancingDisabled**

Objects	{ wlsxTrapTime, wlsxTrapTargetAPBSSID, wlsxTrapTargetAPSSID, wlsxTrapAPMacAddress, wlsxTrapAPRadioNumber, wlsxTrapAPLocation, wlsxTrapAPChannel }
Status	current
Description	This trap indicates that an AM is reporting that an AP has enabled Load balancing.

## **wlsxChannelFrameRetryRateExceeded**

Objects	{ wlsxTrapTime, wlsxTrapAPMacAddress, wlsxTrapAPRadioNumber, wlsxTrapAPLocation, wlsxTrapAPChannel }
Status	current
Description	This trap indicates that an AP has detected that the configured upper threshold for Frame Retry Rate was exceeded on a channel.

## **wlsxChannelFrameFragmentationRateExceeded**

Objects	{ wlsxTrapTime, wlsxTrapAPMacAddress, wlsxTrapAPRadioNumber, wlsxTrapAPLocation, wlsxTrapAPChannel }
Status	current
Description	This trap indicates that an AP has detected that the configured upper threshold for Frame Fragmentation Rate was exceeded on a channel.

## **wlsxChannelFrameErrorRateExceeded**

Objects	{ wlsxTrapTime, wlsxTrapAPMacAddress, wlsxTrapAPRadioNumber, wlsxTrapAPLocation, wlsxTrapAPChannel }
Status	current
Description	This trap indicates that an AP has detected that the configured upper threshold for Frame Receive Error Rate was exceeded on a channel.

## **wlsxSignatureMatchAP**

Objects	{ wlsxTrapTime, wlsxTrapSignatureName, wlsxTrapTargetAPBSSID, wlsxTrapTargetAPSSID, wlsxTrapSnr, wlsxTrapAPMacAddress, wlsxTrapAPRadioNumber, wlsxTrapAPLocation }
Status	current
Description	This trap indicates that an AP detected a signature match in a frame from an access point.

## wlsxSignatureMatchSta

Objects	{ wlsxTrapTime, wlsxTrapSignatureName, wlsxTrapSourceMac, wlsxTrapSnr, wlsxTrapAPMacAddress, wlsxTrapAPRadioNumber, wlsxTrapAPLocation }
Status	current
Description	This trap indicates that an AP detected a signature match in a frame from a Station.

## wlsxChannelRateAnomaly

Objects	{ wlsxTrapTime, wlsxTrapFrameType, wlsxTrapAPMacAddress, wlsxTrapAPRadioNumber, wlsxTrapAPLocation, wlsxTrapAPChannel }
Status	current
Description	This trap indicates that an AP detected frames on a channel which exceed the configured IDS rate threshold. For more info check: <a href="http://www.wve.org/entries/show/WVE-2005-0052">http://www.wve.org/entries/show/WVE-2005-0052</a> <a href="http://www.wve.org/entries/show/WVE-2005-0045">http://www.wve.org/entries/show/WVE-2005-0045</a> <a href="http://www.wve.org/entries/show/WVE-2005-0046">http://www.wve.org/entries/show/WVE-2005-0046</a> <a href="http://www.wve.org/entries/show/WVE-2005-0047">http://www.wve.org/entries/show/WVE-2005-0047</a> <a href="http://www.wve.org/entries/show/WVE-2005-0048">http://www.wve.org/entries/show/WVE-2005-0048</a>

## wlsxNodeRateAnomaly

Objects	wlsxTrapTime, wlsxTrapFrameType, wlsxTrapNodeMac, wlsxTrapSnr, wlsxTrapAPBSSID, wlsxTrapAPLocation
Status	current
Description	This trap indicates that a node is exceeding the threshold set for the frame type.

## wlsxNodeRateAnomalyAP

Objects	{ wlsxTrapTime, wlsxTrapFrameType, wlsxTrapTargetAPBSSID, wlsxTrapTargetAPSSID, wlsxTrapSnr, wlsxTrapAPMacAddress, wlsxTrapAPRadioNumber, wlsxTrapAPLocation }
Status	current
Description	This trap indicates that an AP detected frames transmitted or received by an access point, which exceed the configured IDS rate threshold. For more info check: <a href="http://www.wve.org/entries/show/WVE-2005-0052">http://www.wve.org/entries/show/WVE-2005-0052</a> <a href="http://www.wve.org/entries/show/WVE-2005-0045">http://www.wve.org/entries/show/WVE-2005-0045</a> <a href="http://www.wve.org/entries/show/WVE-2005-0046">http://www.wve.org/entries/show/WVE-2005-0046</a> <a href="http://www.wve.org/entries/show/WVE-2005-0047">http://www.wve.org/entries/show/WVE-2005-0047</a> <a href="http://www.wve.org/entries/show/WVE-2005-0048">http://www.wve.org/entries/show/WVE-2005-0048</a>

## wlsxNodeRateAnomalySta

Objects	{ wlsxTrapTime, wlsxTrapFrameType, wlsxTrapNodeMac, wlsxTrapSnr, wlsxTrapAPMacAddress, wlsxTrapAPRadioNumber, wlsxTrapAPLocation }
Status	current
Description	This trap indicates that an AP detected frames transmitted or received by a node, which exceed the configured IDS rate threshold.

## wlsxEAPRateAnomaly

Objects	{ wlsxTrapTime, wlsxTrapAPMacAddress, wlsxTrapAPRadioNumber, wlsxTrapAPLocation, wlsxTrapAPChannel }
Status	current
Description	This trap indicates that the rate of EAP Handshake packets received by an AP has exceeded the configured IDS EAP Handshake rate threshold. For more info check: <a href="http://www.wve.org/entries/show/WVE-2005-0049">http://www.wve.org/entries/show/WVE-2005-0049</a>

## wlsxSignalAnomaly

Objects	{wlsxTrapTime, wlsxTrapAPMacAddress, wlsxTrapAPRadioNumber, wlsxTrapAPLocation,wlsxTrapAPChannel }
Status	current
Description	This trap indicates that an AM detected a Signal Anomaly.

## wlsxSequenceNumberAnomalyAP

Objects	{ wlsxTrapTime, wlsxTrapTargetAPBSSID, wlsxTrapTargetAPSSID, wlsxTrapSnr, wlsxTrapAPMacAddress, wlsxTrapAPRadioNumber, wlsxTrapAPLocation }
Status	current
Description	This trap indicates that an AM received packets from an AP which exceeds the acceptable sequence number difference. The acceptable sequence number difference is an IDS configuration object. For more info check: <a href="http://www.wve.org/entries/show/WVE-2005-0061">http://www.wve.org/entries/show/WVE-2005-0061</a> <a href="http://www.wve.org/entries/show/WVE-2005-0019">http://www.wve.org/entries/show/WVE-2005-0019</a> <a href="http://www.wve.org/entries/show/WVE-2005-0008">http://www.wve.org/entries/show/WVE-2005-0008</a> <a href="http://www.wve.org/entries/show/WVE-2005-0045">http://www.wve.org/entries/show/WVE-2005-0045</a> <a href="http://www.wve.org/entries/show/WVE-2005-0046">http://www.wve.org/entries/show/WVE-2005-0046</a> <a href="http://www.wve.org/entries/show/WVE-2005-0047">http://www.wve.org/entries/show/WVE-2005-0047</a> <a href="http://www.wve.org/entries/show/WVE-2005-0048">http://www.wve.org/entries/show/WVE-2005-0048</a>

## wlsxSequenceNumberAnomalySta

Objects	wlsxTrapTime, wlsxTrapSourceMac, wlsxTrapSnr, wlsxTrapAPMacAddress, wlsxTrapAPRadioNumber, wlsxTrapAPLocation
Status	current
Description	This trap indicates that an AM received packets from a Node which exceeds the acceptable sequence number difference. The acceptable sequence number difference is an IDS configuration object. For more info check: <a href="http://www.wve.org/entries/show/WVE-2005-0061">http://www.wve.org/entries/show/WVE-2005-0061</a> <a href="http://www.wve.org/entries/show/WVE-2005-0019">http://www.wve.org/entries/show/WVE-2005-0019</a> <a href="http://www.wve.org/entries/show/WVE-2005-0008">http://www.wve.org/entries/show/WVE-2005-0008</a> <a href="http://www.wve.org/entries/show/WVE-2005-0045">http://www.wve.org/entries/show/WVE-2005-0045</a> <a href="http://www.wve.org/entries/show/WVE-2005-0046">http://www.wve.org/entries/show/WVE-2005-0046</a> <a href="http://www.wve.org/entries/show/WVE-2005-0047">http://www.wve.org/entries/show/WVE-2005-0047</a> <a href="http://www.wve.org/entries/show/WVE-2005-0048">http://www.wve.org/entries/show/WVE-2005-0048</a>

## wlsxDisconnectStationAttack

Objects	{ wlsxTrapTime, wlsxTrapFrameType, wlsxTrapSourceMac, wlsxTrapSnr, wlsxTrapAPMacAddress, wlsxTrapAPRadioNumber, wlsxTrapAPLocation }
Status	current
Description	This trap indicates that an AM detected a station Disconnect attack. For more info check: <a href="http://www.wve.org/entries/show/WVE-2005-0045">http://www.wve.org/entries/show/WVE-2005-0045</a> <a href="http://www.wve.org/entries/show/WVE-2005-0046">http://www.wve.org/entries/show/WVE-2005-0046</a> <a href="http://www.wve.org/entries/show/WVE-2005-0048">http://www.wve.org/entries/show/WVE-2005-0048</a>

## wlsxApFloodAttack

Objects	{ wlsxTrapTime, wlsxTrapAPMacAddress, wlsxTrapAPRadioNumber, wlsxTrapAPLocation }
Status	current
Description	This trap indicates that the number of potential fake APs detected by an AP has exceeded the configured IDS threshold. This is the total number of fake APs observed across all bands. For more info check: <a href="http://www.wve.org/entries/show/WVE-2005-0056">http://www.wve.org/entries/show/WVE-2005-0056</a>

## wlsxAdhocNetwork

Objects	{ wlsxTrapTime, wlsxTrapSourceMac, wlsxTrapTargetAPBSSID, wlsxTrapTargetAPSSID, wlsxTrapSnr, wlsxTrapAPMacAddress, wlsxTrapAPRadioNumber, wlsxTrapAPLocation }
Status	current
Description	This trap indicates that an AM detected an AdhocNetwork. An Station is connected to an ad hoc AP.

## wlsxWirelessBridge

Objects	{ wlsxTrapTime, wlsxTrapTransmitterMac, wlsxTrapReceiverMac, wlsxTrapSnr, wlsxTrapAPMacAddress, wlsxTrapAPRadioNumber, wlsxTrapAPLocation }
Status	current
Description	This trap indicates that an AP detected a Wireless Bridge when a WDS frame was seen between the transmitter and receiver addresses.

## wlsxInvalidMacOUIAP

Objects	{ wlsxTrapTime, wlsxTrapAddressType, wlsxTrapTargetAPBSSID, wlsxTrapTargetAPSSID, wlsxTrapSnr, wlsxTrapAPMacAddress, wlsxTrapAPRadioNumber, wlsxTrapAPLocation }
Status	current
Description	This trap indicates that an AP detected an invalid MAC OUI in the BSSID of a frame. An invalid MAC OUI suggests that the frame may be spoofed.



## wlsxInvalidMacOUISta

Objects	{ wlsxTrapTime, wlsxTrapAddressType, wlsxTrapNodeMac, wlsxTrapSnr, wlsxTrapAPMacAddress, wlsxTrapAPRadioNumber, wlsxTrapAPLocation }
Status	current
Description	This trap indicates that an AP detected an invalid MAC OUI in the SRC or DST address of a frame. An invalid MAC OUI suggests that the frame may be spoofed.

## wlsxWPEMisconfiguration

Objects	{ wlsxTrapTime, wlsxTrapTargetAPBSSID, wlsxTrapTargetAPSSID, wlsxTrapAPMacAddress, wlsxTrapAPRadioNumber, wlsxTrapAPLocation, wlsxTrapAPChannel }
Status	current
Description	This trap indicates that an AP detected an access point that is misconfigured because it does not have Privacy enabled.

## wlsxStaRepeatWEPIVViolation

Objects	{ wlsxTrapTime, wlsxTrapTargetAPBSSID, wlsxTrapTargetAPSSID, wlsxTrapNodeMac, wlsxTrapAPMacAddress, wlsxTrapAPRadioNumber, wlsxTrapAPLocation, wlsxTrapAPChannel }
Status	current
Description	This trap indicates that an AP detected that a valid station is using the same WEP initialization vector in consecutive packets.

## wlsxStaWeakWEPIVViolation

Objects	{ wlsxTrapTime, wlsxTrapTargetAPBSSID, wlsxTrapTargetAPSSID, wlsxTrapNodeMac, wlsxTrapAPMacAddress, wlsxTrapAPRadioNumber, wlsxTrapAPLocation, wlsxTrapAPChannel }
Status	current
Description	This trap indicates that an AP detected that a valid station is using a Weak WEP initialization vector.

## wlsxStaAssociatedToUnsecureAP

Objects	{ wlsxTrapTime, wlsxTrapTargetAPBSSID, wlsxTrapTargetAPSSID, wlsxTrapAPMacAddress, wlsxTrapAPRadioNumber, wlsxTrapNodeMac, wlsxTrapAPLocation, wlsxTrapAPChannel, wlsxTrapRogueInfoURL }
Status	current
Description	This trap indicates that an AM detected a client associated with a Rogue access point.

## wlsxStaUnAssociatedFromUnsecureAP

Objects	{ wlsxTrapTime, wlsxTrapTargetAPBSSID, wlsxTrapTargetAPSSID, wlsxTrapAPMacAddress, wlsxTrapAPRadioNumber, wlsxTrapNodeMac }
Status	current
Description	This trap indicates that a previously detected rogue access point association is no longer present.

## wlsxAdhocNetworkBridgeDetected

Objects	{ wlsxTrapTime, wlsxTrapSourceMac, wlsxTrapTargetAPBSSID, wlsxTrapTargetAPSSID, wlsxTrapAPMacAddress, wlsxTrapAPRadioNumber, wlsxTrapAPLocation, wlsxTrapAPChannel }
Status	current
Description	This trap indicates that an AM has detected an Ad hoc network that is bridging to a wired network.

## wlsxInterferingApDetected

Objects	{ wlsxTrapTime, wlsxTrapTargetAPBSSID, wlsxTrapTargetAPSSID, wlsxTrapAPMacAddress, wlsxTrapAPRadioNumber, wlsxTrapAPLocation, wlsxTrapAPChannel, wlsxTrapInterferingAPIInfoURL }
Status	current
Description	This trap indicates that an AP detected an access point classified as Interfering. The access point is declared Interfering because it is neither authorized or classified as Rogue.

## wlsxColdStart

Objects	wlsxTrapTime
Status	current
Description	An enterprise version of cold start trap, which contains the controller time stamp.

## wlsxWarmStart

Objects	wlsxTrapTime
Status	current
Description	An enterprise version of warm start trap, which contains the controller time stamp.

## wlsxAPImpersonation

Objects	{ wlsxTrapTime, wlsxTrapTargetAPBSSID, wlsxTrapTargetAPSSID, wlsxTrapAPMacAddress, wlsxTrapAPRadioNumber, wlsxTrapAPLocation, wlsxTrapAPChannel }
Status	current
Description	This trap indicates that an AP detected AP Impersonation because the number of beacons seen has exceeded the expected number by the configured percentage threshold. The expected number is calculated based on the Beacon Interval Field in the Beacon frame.

## wlsxNAuthServerIsDown

Objects	{ wlsxTrapTime, wlsxTrapAuthServerName }
Status	current
Description	This trap indicates that an authentication server is down.

## wlsxWindowsBridgeDetected

Objects	{ wlsxTrapTime, wlsxTrapSourceMac, wlsxTrapTargetAPBSSID, wlsxTrapTargetAPSSID, wlsxTrapAPMacAddress, wlsxTrapAPRadioNumber, wlsxTrapAPLocation, wlsxTrapAPChannel }
Status	current
Description	This trap indicates that an AM has detected a station that is bridging from a wireless network to a wired network.

## wlsxSignAPNetstumbler

Objects	{ wlsxTrapTime, wlsxTrapSignatureName, wlsxTrapTargetAPBSSID, wlsxTrapTargetAPSSID, wlsxTrapSnr, wlsxTrapAPMacAddress, wlsxTrapAPRadioNumber, wlsxTrapAPLocation }
Status	current
Description	This trap indicates that an AP detected a signature match for Netstumbler from an access point. For more info check: <a href="http://www.wve.org/entries/show/WVE-2005-0025">http://www.wve.org/entries/show/WVE-2005-0025</a>

## wlsxSignStaNetstumbler

Objects	{ wlsxTrapTime, wlsxTrapSignatureName, wlsxTrapSourceMac, wlsxTrapSnr, wlsxTrapAPMacAddress, wlsxTrapAPRadioNumber, wlsxTrapAPLocation }
Status	current
Description	This trap indicates that an AP detected a signature match for Netstumbler from a Station. For more info check: <a href="http://www.wve.org/entries/show/WVE-2005-0025">http://www.wve.org/entries/show/WVE-2005-0025</a>

## wlsxSignAPAsleep

Objects	{ wlsxTrapTime, wlsxTrapSignatureName, wlsxTrapTargetAPBSSID, wlsxTrapTargetAPSSID, wlsxTrapSnr, wlsxTrapAPMacAddress, wlsxTrapAPRadioNumber, wlsxTrapAPLocation }
Status	current
Description	This trap indicates that an AP detected a signature match for ASLEAP from an access point. For more info check: <a href="http://www.wve.org/entries/show/WVE-2005-0027">http://www.wve.org/entries/show/WVE-2005-0027</a>

## wlsxSignStaAsleep

Objects	{ wlsxTrapTime, wlsxTrapSignatureName, wlsxTrapSourceMac, wlsxTrapSnr, wlsxTrapAPMacAddress, wlsxTrapAPRadioNumber, wlsxTrapAPLocation }
Status	current
Description	This trap indicates that an AP detected a signature match for ASLEAP from a Station. For more info check: <a href="http://www.wve.org/entries/show/WVE-2005-0027">http://www.wve.org/entries/show/WVE-2005-0027</a>

## wlsxSignAPAirjack

Objects	{ wlsxTrapTime, wlsxTrapSignatureName, wlsxTrapTargetAPBSSID, wlsxTrapTargetAPSSID, wlsxTrapSnr, wlsxTrapAPMacAddress, wlsxTrapAPRadioNumber, wlsxTrapAPLocation }
Status	current
Description	This trap indicates that an AP detected a signature match for AirJack from an access point. For more info check: <a href="http://www.wve.org/entries/show/WVE-2005-0018">http://www.wve.org/entries/show/WVE-2005-0018</a>

## wlsxSignStaAirjack

Objects	{ wlsxTrapTime, wlsxTrapSignatureName, wlsxTrapSourceMac, wlsxTrapSnr, wlsxTrapAPMacAddress, wlsxTrapAPRadioNumber, wlsxTrapAPLocation }
Status	current
Description	This trap indicates that an AP detected a signature match for AirJack from a Station. For more info check: <a href="http://www.wve.org/entries/show/WVE-2005-0018">http://www.wve.org/entries/show/WVE-2005-0018</a>

## wlsxSignAPNullProbeResp

Objects	{ wlsxTrapTime, wlsxTrapSignatureName, wlsxTrapTargetAPBSSID, wlsxTrapTargetAPSSID, wlsxTrapSnr, wlsxTrapAPMacAddress, wlsxTrapAPRadioNumber, wlsxTrapAPLocation }
Status	current
Description	This trap indicates that an AP detected a signature match for Null-Probe-Response from an access point. For more info check: <a href="http://www.wve.org/entries/show/WVE-2006-0064">http://www.wve.org/entries/show/WVE-2006-0064</a>

## wlsxSignStaNullProbeResp

Objects	{ wlsxTrapTime, wlsxTrapSignatureName, wlsxTrapSourceMac, wlsxTrapSnr, wlsxTrapAPMacAddress, wlsxTrapAPRadioNumber, wlsxTrapAPLocation }
Status	current
Description	This trap indicates that an AP detected a signature match for Null-Probe-Response from a Station. For more info check: <a href="http://www.wve.org/entries/show/WVE-2006-0064">http://www.wve.org/entries/show/WVE-2006-0064</a>

## wlsxSignAPDeathBcast

Objects	{ wlsxTrapTime, wlsxTrapSignatureName, wlsxTrapTargetAPBSSID, wlsxTrapTargetAPSSID, wlsxTrapSnr, wlsxTrapAPMacAddress, wlsxTrapAPRadioNumber, wlsxTrapAPLocation }
Status	current
Description	This trap indicates that an AP detected a signature match for Death-Broadcast from an access point. For more info check: <a href="http://www.wve.org/entries/show/WVE-2005-0019">http://www.wve.org/entries/show/WVE-2005-0019</a> <a href="http://www.wve.org/entries/show/WVE-2005-0045">http://www.wve.org/entries/show/WVE-2005-0045</a>

## wlsxSignStaDeauthBcast

Objects	{ wlsxTrapTime, wlsxTrapSignatureName, wlsxTrapSourceMac, wlsxTrapSnr, wlsxTrapAPMacAddress, wlsxTrapAPRadioNumber, wlsxTrapAPLocation }
Status	current
Description	This trap indicates that an AP detected a signature match for Deauth-Broadcast from a Station. For more info check: <a href="http://www.wve.org/entries/show/WVE-2005-0019">http://www.wve.org/entries/show/WVE-2005-0019</a> <a href="http://www.wve.org/entries/show/WVE-2005-0045">http://www.wve.org/entries/show/WVE-2005-0045</a>

## wlsxWindowsBridgeDetectedAP

Objects	{ wlsxTrapTime, wlsxTrapTargetAPBSSID, wlsxTrapTargetAPSSID, wlsxTrapAPMacAddress, wlsxTrapAPRadioNumber, wlsxTrapAPLocation, wlsxTrapAPChannel }
Status	current
Description	This trap indicates that an AP is detecting an access point that is bridging from a wireless network to a wired network.

## wlsxWindowsBridgeDetectedSta

Objects	{ wlsxTrapTime, wlsxTrapSourceMac, wlsxTrapTargetAPBSSID, wlsxTrapTargetAPSSID, wlsxTrapAPMacAddress, wlsxTrapAPRadioNumber, wlsxTrapAPLocation, wlsxTrapAPChannel }
Status	current
Description	This trap indicates that an AP is detecting a station that is bridging from a wireless network to a wired network.

## wlsxAdhocNetworkBridgeDetectedAP

Objects	{ wlsxTrapTime, wlsxTrapTargetAPBSSID, wlsxTrapTargetAPSSID, wlsxTrapAPMacAddress, wlsxTrapAPRadioNumber, wlsxTrapAPLocation, wlsxTrapAPChannel }
Status	current
Description	This trap indicates that an AM has detected an Ad hoc network that is bridging to a wired network

## wlsxAdhocNetworkBridgeDetectedSta

Objects	wlsxTrapTime, wlsxTrapSourceMac, wlsxTrapTargetAPBSSID, wlsxTrapTargetAPSSID, wlsxTrapAPMacAddress, wlsxTrapAPRadioNumber, wlsxTrapAPLocation, wlsxTrapAPChannel
Status	current
Description	This trap indicates that an AM has detected an Ad hoc network that is bridging to a wired network

## wlsxDisconnectStationAttackAP

Objects	wlsxTrapTime, wlsxTrapFrameType, wlsxTrapSourceMac, wlsxTrapSnr, wlsxTrapAPMacAddress, wlsxTrapAPRadioNumber, wlsxTrapAPLocation
Status	current
Description	This trap indicates that an AM detected a station Disconnect attack. For more info check: <a href="http://www.wve.org/entries/show/WVE-2005-0045">http://www.wve.org/entries/show/WVE-2005-0045</a> <a href="http://www.wve.org/entries/show/WVE-2005-0046">http://www.wve.org/entries/show/WVE-2005-0046</a> <a href="http://www.wve.org/entries/show/WVE-2005-0048">http://www.wve.org/entries/show/WVE-2005-0048</a>

## wlsxDisconnectStationAttackSta

Objects	{ wlsxTrapTime, wlsxTrapTargetAPBSSID, wlsxTrapTargetAPSSID, wlsxTrapSourceMac, wlsxTrapSnr, wlsxTrapAPMacAddress, wlsxTrapAPRadioNumber, wlsxTrapAPLocation, wlsxTrapAPChannel }
Status	current
Description	This trap indicates that an AM detected a station Disconnect attack. For more info check: <a href="http://www.wve.org/entries/show/WVE-2005-0045">http://www.wve.org/entries/show/WVE-2005-0045</a> <a href="http://www.wve.org/entries/show/WVE-2005-0046">http://www.wve.org/entries/show/WVE-2005-0046</a> <a href="http://www.wve.org/entries/show/WVE-2005-0048">http://www.wve.org/entries/show/WVE-2005-0048</a>

## wlsxSuspectUnsecureAPDetected

Objects	wlsxTrapTime, wlsxTrapTargetAPBSSID, wlsxTrapTargetAPSSID, wlsxTrapAPRadioNumber
Status	current
Description	This trap indicates that a previously detected access point, classified Suspected Rogue, is either no longer present in the network or has changed its state.

## wlsxHtGreenfieldSupported

Objects	wlsxTrapTime, wlsxTrapTargetAPBSSID, wlsxTrapTargetAPSSID, wlsxTrapAPMacAddress, wlsxTrapAPRadioNumber, wlsxTrapAPLocation, wlsxTrapAPChannel
Status	current
Description	This trap indicates that an AP detected an access point that supports HT Greenfield mode. For more info check: <a href="http://www.wve.org/entries/show/WVE-2008-0005">http://www.wve.org/entries/show/WVE-2008-0005</a>

## wlsxHT40MHzIntoleranceAP

Objects	{ wlsxTrapTime, wlsxTrapTargetAPBSSID, wlsxTrapTargetAPSSID, wlsxTrapAPMacAddress, wlsxTrapAPRadioNumber, wlsxTrapAPLocation, wlsxTrapAPChannel }
Status	current
Description	This trap indicates that an AP is detecting an access point with the HT 40MHz intolerance setting. For more info check: <a href="http://www.wve.org/entries/show/WVE-2008-0004">http://www.wve.org/entries/show/WVE-2008-0004</a>

## wlsxHT40MHzIntoleranceSta

Objects	{ wlsxTrapTime, wlsxTrapSourceMac, wlsxTrapSnr, wlsxTrapAPChannel, wlsxTrapFrameType, wlsxTrapAPMacAddress, wlsxTrapAPRadioNumber, wlsxTrapAPLocation }
Status	current
Description	This trap indicates that the system is detecting an HT 40MHz Intolerance setting from a Station. For more info check: <a href="http://www.wve.org/entries/show/WVE-2008-0004">http://www.wve.org/entries/show/WVE-2008-0004</a>

## wlsxNAdhocNetwork

Objects	{ wlsxTrapTime, wlsxTrapSourceMac, wlsxTrapTargetAPBSSID, wlsxTrapTargetAPSSID, wlsxTrapSnr, wlsxTrapAPMacAddress, wlsxTrapAPRadioNumber, wlsxTrapAPLocation, wlsxTrapAPChannel }
Status	current
Description	This trap indicates that an AP detected an ad hoc network where a station is connected to an ad hoc access point.

## wlsxNAdhocNetworkBridgeDetectedAP

Objects	{ wlsxTrapTime, wlsxTrapTargetAPBSSID, wlsxTrapTargetAPSSID, wlsxTrapSnr, wlsxTrapAPMacAddress, wlsxTrapAPRadioNumber, wlsxTrapAPLocation, wlsxTrapAPChannel }
Status	current
Description	This trap indicates that an AP detected an ad hoc network that is bridging to a wired network.

## wlsxNAdhocNetworkBridgeDetectedSta

Objects	{ wlsxTrapTime, wlsxTrapSourceMac, wlsxTrapTargetAPBSSID, wlsxTrapTargetAPSSID, wlsxTrapSnr, wlsxTrapAPMacAddress, wlsxTrapAPRadioNumber, wlsxTrapAPLocation, wlsxTrapAPChannel }
Status	current
Description	This trap indicates that an AP detected an ad hoc network that is bridging to a wired network.

## wlsxClientFloodAttack

Objects	wlsxTrapTime, wlsxTrapAPMacAddress, wlsxTrapAPRadioNumber, wlsxTrapAPLocation
Status	current
Description	This trap indicates that the number of potential fake clients detected by an AP has exceeded the configured IDS threshold. This is the total number of fake clients observed across all bands. For more info check: <a href="http://www.wve.org/entries/show/WVE-2005-0056">http://www.wve.org/entries/show/WVE-2005-0056</a>

## wlsxValidClientNotUsingEncryption

Objects	wlsxTrapTime, wlsxTrapTargetAPBSSID, wlsxTrapSourceMac, wlsxTrapReceiverMac, wlsxTrapNodeMac, wlsxTrapSnr, wlsxTrapAPMacAddress, wlsxTrapAPRadioNumber, wlsxTrapAPLocation, wlsxTrapAPChannel
Status	current
Description	This trap indicates that an AP detected an unencrypted data frame between a valid client and an access point.

## wlsxAdhocUsingValidSSID

Objects	wlsxTrapTime, wlsxTrapTargetAPBSSID, wlsxTrapTargetAPSSID, wlsxTrapSnr, wlsxTrapAPMacAddress, wlsxTrapAPRadioNumber, wlsxTrapAPLocation, wlsxTrapAPChannel
Status	current
Description	This trap indicates that an AP detected an ad hoc network using a valid/protected SSID. For more info check: <a href="http://www.wve.org/entries/show/WVE-2005-0008">http://www.wve.org/entries/show/WVE-2005-0008</a>

## wlsxAPSpooftingDetected

Objects	wlsxTrapTime, wlsxTrapTargetAPBSSID, wlsxTrapSourceMac, wlsxTrapReceiverMac, wlsxTrapSpooftedFrameType, wlsxTrapSnr, wlsxTrapAPMacAddress, wlsxTrapAPRadioNumber, wlsxTrapAPLocation, wlsxTrapAPChannel
Status	current
Description	This trap indicates that an AP detected that one of its virtual APs is being spoofted using MAC spoofting. For more info check: <a href="http://www.wve.org/entries/show/WVE-2005-0019">http://www.wve.org/entries/show/WVE-2005-0019</a>

## wlsxClientAssociatingOnWrongChannel

Objects	wlsxTrapTime, wlsxTrapTargetAPBSSID, wlsxTrapSourceMac, wlsxTrapReceiverMac, wlsxTrapSpooftedFrameType, wlsxTrapSnr, wlsxTrapAPMacAddress, wlsxTrapAPRadioNumber, wlsxTrapAPLocation, wlsxTrapAPChannel
Status	current
Description	This trap indicates that an AP detected a client trying to associate to one of its BSSIDs on the wrong channel. This can be a sign that the BSSID is being spoofted in order to fool the client into thinking the AP is operating on another channel.



## wlsxNDisconnectStationAttack

Objects	wlsxTrapTime, wlsxTrapTargetAPBSSID, wlsxTrapTargetAPSSID, wlsxTrapSourceMac, wlsxTrapSnr, wlsxTrapAPMacAddress, wlsxTrapAPRadioNumber, wlsxTrapAPLocation, wlsxTrapAPChannel
Status	current
Description	This trap indicates that an AP has determined that a client is under Disconnect Attack because the rate of Assoc/Reassoc Response packets received by that client exceeds the configured threshold. For more info check: <a href="http://www.wve.org/entries/show/WVE-2005-0045">http://www.wve.org/entries/show/WVE-2005-0045</a> <a href="http://www.wve.org/entries/show/WVE-2005-0046">http://www.wve.org/entries/show/WVE-2005-0046</a> <a href="http://www.wve.org/entries/show/WVE-2005-0048">http://www.wve.org/entries/show/WVE-2005-0048</a>

## wlsxNStaUnAssociatedFromUnsecureAP

Objects	wlsxTrapTime, wlsxTrapTargetAPBSSID, wlsxTrapTargetAPSSID, wlsxTrapAPMacAddress, wlsxTrapAPRadioNumber, wlsxTrapNodeMac, wlsxTrapAPLocation, wlsxTrapAPChannel
Status	current
Description	This trap indicates that an AP that had previously detected a client association to a Rogue access point is no longer detecting that association.

## wlsxOmertaAttack

Objects	wlsxTrapTime, wlsxTrapTargetAPBSSID, wlsxTrapTargetAPSSID, wlsxTrapNodeMac, wlsxTrapSnr, wlsxTrapAPMacAddress, wlsxTrapAPRadioNumber, wlsxTrapAPLocation, wlsxTrapAPChannel
Status	current
Description	This trap indicates that an AP detected an Omerta attack. For more info check: <a href="http://www.wve.org/entries/show/WVE-2005-0053">http://www.wve.org/entries/show/WVE-2005-0053</a>

## wlsxTKIPReplayAttack

Objects	wlsxTrapTime, wlsxTrapAPMacAddress, wlsxTrapAPRadioNumber, wlsxTrapAPLocation, wlsxTrapSourceMac, wlsxTrapReceiverMac, wlsxTrapTargetAPBSSID, wlsxTrapAPChannel, wlsxTrapSnr
Status	current
Description	This trap indicates that an AP detected a TKIP replay attack. If successful this could be the precursor to more advanced attacks. For more info check: <a href="http://www.wve.org/entries/show/WVE-2008-0013">http://www.wve.org/entries/show/WVE-2008-0013</a>

## wlsxChopChopAttack

Objects	wlsxTrapTime, wlsxTrapAPMacAddress, wlsxTrapAPRadioNumber, wlsxTrapAPLocation, wlsxTrapSourceMac, wlsxTrapReceiverMac, wlsxTrapTargetAPBSSID, wlsxTrapAPChannel, wlsxTrapSnr
Status	current
Description	This trap indicates that an AP detected a ChopChop attack. For more info check: <a href="http://www.wve.org/entries/show/WVE-2006-0038">http://www.wve.org/entries/show/WVE-2006-0038</a>

## wlsxFatalJackAttack

Objects	wlsxTrapTime, wlsxTrapTargetAPBSSID, wlsxTrapTargetAPSSID, wlsxTrapNodeMac, wlsxTrapSnr, wlsxTrapAPMacAddress, wlsxTrapAPRadioNumber, wlsxTrapAPLocation, wlsxTrapAPChannel
Status	current
Description	This trap indicates that an AP detected a FATA-Jack attack. For more info check: <a href="http://www.wve.org/entries/show/WVE-2006-0057">http://www.wve.org/entries/show/WVE-2006-0057</a>

## wlsxInvalidAddressCombination

Objects	wlsxTrapTime, wlsxTrapAPMacAddress, wlsxTrapAPRadioNumber, wlsxTrapAPLocation, wlsxTrapSourceMac, wlsxTrapReceiverMac, wlsxTrapAPChannel, wlsxTrapSnr
Status	current
Description	This trap indicates that an AP detected an invalid source and destination combination. For more info check: <a href="http://www.wve.org/entries/show/WVE-2008-0011">http://www.wve.org/entries/show/WVE-2008-0011</a>

## wlsxValidClientMisassociation

Objects	wlsxTrapTime, wlsxTrapTargetAPBSSID, wlsxTrapTargetAPSSID, wlsxTrapNodeMac, wlsxTrapAssociationType, wlsxTrapSnr, wlsxTrapAPMacAddress, wlsxTrapAPRadioNumber, wlsxTrapAPLocation, wlsxTrapAPChannel
Status	current
Description	This trap indicates that an AP detected a misassociation between a valid client and an unsafe AP.

## wlsxMalformedHTIEDetected

Objects	wlsxTrapTime, wlsxTrapAPMacAddress, wlsxTrapAPRadioNumber, wlsxTrapAPLocation, wlsxTrapSourceMac, wlsxTrapReceiverMac, wlsxTrapTargetAPBSSID, wlsxTrapAPChannel, wlsxTrapSnr
Status	current
Description	This trap indicates that an AP detected a malformed HT Information Element. This can be the result of a misbehaving wireless driver or it may be an indication of a new wireless attack.

## wlsxMalformedAssocReqDetected

Objects	wlsxTrapTime, wlsxTrapAPMacAddress, wlsxTrapAPRadioNumber, wlsxTrapAPLocation, wlsxTrapSourceMac, wlsxTrapReceiverMac, wlsxTrapTargetAPBSSID, wlsxTrapAPChannel, wlsxTrapSnr
Status	current
Description	This trap indicates that an AP detected a malformed association request with a NULL SSID. For more info check: <a href="http://www.wve.org/entries/show/WVE-2008-0010">http://www.wve.org/entries/show/WVE-2008-0010</a>

## wlsxOverflowIEDetected

Objects	wlsxTrapTime, wlsxTrapAPMacAddress, wlsxTrapAPRadioNumber, wlsxTrapAPLocation, wlsxTrapSourceMac, wlsxTrapReceiverMac, wlsxTrapTargetAPBSSID, wlsxTrapAPChannel, wlsxTrapSnr
Status	current
Description	This trap indicates that an AP detected a management frame with a malformed information element. The declared length of the element is larger than the entire frame containing the element. This may be used to corrupt or crash wireless drivers. For more info check: <a href="http://www.wve.org/entries/show/WVE-2008-0008">http://www.wve.org/entries/show/WVE-2008-0008</a>

## wlsxOverflowEAPOLKeyDetected

Objects	wlsxTrapTime, wlsxTrapAPMacAddress, wlsxTrapAPRadioNumber, wlsxTrapAPLocation, wlsxTrapSourceMac, wlsxTrapReceiverMac, wlsxTrapTargetAPBSSID, wlsxTrapAPChannel, wlsxTrapSnr
Status	current
Description	This trap indicates that an AP detected a key in an EAPOL Key message with a specified length greater than the length of the entire message. For more info check: <a href="http://www.wve.org/entries/show/WVE-2008-0009">http://www.wve.org/entries/show/WVE-2008-0009</a>

## wlsxMalformedFrameLargeDurationDetected

Objects	wlsxTrapTime, wlsxTrapAPMacAddress, wlsxTrapAPRadioNumber, wlsxTrapAPLocation, wlsxTrapSourceMac, wlsxTrapAPChannel, wlsxTrapSnr
Status	current
Description	This trap indicates that an AP detected an unusually large duration in a wireless frame. This may be an attempt to block other devices from transmitting. For more info check: <a href="http://www.wve.org/entries/show/WVE-2005-0051">http://www.wve.org/entries/show/WVE-2005-0051</a>

## wlsxMalformedFrameWrongChannelDetected

Objects	wlsxTrapTime, wlsxTrapAPMacAddress, wlsxTrapAPRadioNumber, wlsxTrapAPLocation, wlsxTrapSourceMac, wlsxTrapTargetAPBSSID, wlsxTrapTargetAPSSID, wlsxTrapTargetAPChannel, wlsxTrapAPChannel, wlsxTrapSnr
Status	current
Description	This trap indicates that an AP detected a beacon on one channel advertising another channel. This could be an attempt to lure clients away from a valid AP. For more info check: <a href="http://www.wve.org/entries/show/WVE-2006-0050">http://www.wve.org/entries/show/WVE-2006-0050</a>

## wlsxMalformedAuthFrame

Objects	wlsxTrapTime, wlsxTrapTargetAPBSSID, wlsxTrapTargetAPSSID, wlsxTrapNodeMac, wlsxTrapSnr, wlsxTrapAPMacAddress, wlsxTrapAPRadioNumber, wlsxTrapAPLocation, wlsxTrapAPChannel
Status	current
Description	This trap indicates that an AP detected an authentication frame with either a bad algorithm (similar to Fata-Jack) or a bad transaction. For more info check: <a href="http://www.wve.org/entries/show/WVE-2006-0057">http://www.wve.org/entries/show/WVE-2006-0057</a>

## **wlsxCTSRateAnomaly**

Objects	wlsxTrapTime, wlsxTrapAPMacAddress, wlsxTrapAPRadioNumber, wlsxTrapAPLocation, wlsxTrapAPChannel
Status	current
Description	This trap indicates that the rate of CTS packets received by an AP exceeds the configured IDS threshold..

## **wlsxRTSRateAnomaly**

Objects	wlsxTrapTime, wlsxTrapAPMacAddress, wlsxTrapAPRadioNumber, wlsxTrapAPLocation, wlsxTrapAPChannel
Status	current
Description	This trap indicates that the rate of RTS packets received by an AP exceeds the configured IDS threshold.

## **wlsxNRogueAPDetected**

Objects	wlsxTrapTime, wlsxTrapTargetAPBSSID, wlsxTrapTargetAPSSID, wlsxTrapAPChannel
Status	current
Description	This trap indicates that an unauthorized access point is connected to the wired network. The access point is classified as Rogue by the system.

## **wlsxNRogueAPResolved**

Objects	wlsxTrapTime, wlsxTrapTargetAPBSSID, wlsxTrapTargetAPSSID, wlsxTrapAPChannel
Status	current
Description	This trap indicates that a previously detected access point, classified as Rogue, is either no longer present in the network or it changed its state.

## **wlsxNeighborAPDetected**

Objects	wlsxTrapTime, wlsxTrapTargetAPBSSID, wlsxTrapTargetAPSSID, wlsxTrapAPChannel
Status	current
Description	This trap indicates that an access point has been classified as a Neighbor by the system.

## **wlsxNInterferingAPDetected**

Objects	wlsxTrapTime, wlsxTrapTargetAPBSSID, wlsxTrapTargetAPSSID, wlsxTrapAPChannel
Status	current
Description	This trap indicates that an access point has been classified as Interfering by the system. The access point is declared Interfering because it is not authorized, nor has it been classified as a Rogue.

## wlsxNSuspectRogueAPDetected

Objects	wlsxTrapTime, wlsxTrapTargetAPBSSID, wlsxTrapTargetAPSSID, wlsxTrapAPChannel, wlsxTrapConfidenceLevel
Status	current
Description	This trap indicates that an access point, classified as Suspected Rogue, is detected by the system. The AP is suspected to be rogue with the supplied confidence level.

## wlsxNSuspectRogueAPResolved

Objects	wlsxTrapTime, wlsxTrapTargetAPBSSID, wlsxTrapTargetAPSSID, wlsxTrapAPChannel
Status	current
Description	This trap indicates that a previously detected access point, classified as Suspected Rogue, is either no longer present in the network or has changed its state.

## wlsxBlockAckAttackDetected

Objects	wlsxTrapTime, wlsxTrapAPMacAddress, wlsxTrapAPRadioNumber, wlsxTrapAPLocation, wlsxTrapSourceMac, wlsxTrapReceiverMac, wlsxTrapTargetAPBSSID, wlsxTrapAPChannel, wlsxTrapSnr
Status	current
Description	This trap indicates that an attempt has been made to deny service to the source address by spoofing a block ACK add request that sets a sequence number window outside the currently used window. For more info check: <a href="http://www.wve.org/entries/show/WVE-2008-0006">http://www.wve.org/entries/show/WVE-2008-0006</a>

## wlsxHotspotterAttackDetected

Objects	wlsxTrapTime, wlsxTrapAPMacAddress, wlsxTrapAPRadioNumber, wlsxTrapAPLocation, wlsxTrapNodeMac, wlsxTrapSourceMac, wlsxTrapTargetAPBSSID, wlsxTrapAPChannel, wlsxTrapSnr, wlsxTrapTargetAPSSID
Status	current
Description	This trap indicates that a new AP has appeared immediately following a client probe request. This is indicative of the Hotspotter tool or similar that attempts to trap clients with a fake hotspot or other wireless network. For more info check: <a href="http://www.wve.org/entries/show/WVE-2005-0054">http://www.wve.org/entries/show/WVE-2005-0054</a>

## wlsxNSignatureMatch

Objects	wlsxTrapTime, wlsxTrapTargetAPBSSID, wlsxTrapTransmitterMac, wlsxTrapReceiverMac, wlsxTrapSignatureName, wlsxTrapSnr, wlsxTrapAPMacAddress, wlsxTrapAPRadioNumber, wlsxTrapAPLocation, wlsxTrapAPChannel
Status	current
Description	This trap indicates that an AP detected a signature match in a frame.

## wlsxNSignatureMatchNetstumbler

Objects	wlsxTrapTime, wlsxTrapTargetAPBSSID, wlsxTrapTransmitterMac, wlsxTrapReceiverMac, wlsxTrapSignatureName, wlsxTrapSnr, wlsxTrapAPMacAddress, wlsxTrapAPRadioNumber, wlsxTrapAPLocation, wlsxTrapAPChannel
Status	current
Description	This trap indicates that an AP detected a signature match for Netstumbler in a frame. For more info check: <a href="http://www.wve.org/entries/show/WVE-2005-0025">http://www.wve.org/entries/show/WVE-2005-0025</a>

## wlsxNSignatureMatchAsleep

Objects	wlsxTrapTime, wlsxTrapTargetAPBSSID, wlsxTrapTransmitterMac, wlsxTrapReceiverMac, wlsxTrapSignatureName, wlsxTrapSnr, wlsxTrapAPMacAddress, wlsxTrapAPRadioNumber, wlsxTrapAPLocation, wlsxTrapAPChannel
Status	current
Description	This trap indicates that an AP detected a signature match for ASLEAP in a frame. For more info check: <a href="http://www.wve.org/entries/show/WVE-2005-0027">http://www.wve.org/entries/show/WVE-2005-0027</a>

## wlsxNSignatureMatchAirjack

Objects	wlsxTrapTime, wlsxTrapTargetAPBSSID, wlsxTrapTransmitterMac, wlsxTrapReceiverMac, wlsxTrapSignatureName, wlsxTrapSnr, wlsxTrapAPMacAddress, wlsxTrapAPRadioNumber, wlsxTrapAPLocation, wlsxTrapAPChannel
Status	current
Description	This trap indicates that an AP detected a signature match for Airjack in a frame. For more info check: <a href="http://www.wve.org/entries/show/WVE-2005-0018">http://www.wve.org/entries/show/WVE-2005-0018</a>

## wlsxNSignatureMatchNullProbeResp

Objects	wlsxTrapTime, wlsxTrapTargetAPBSSID, wlsxTrapTransmitterMac, wlsxTrapReceiverMac, wlsxTrapSignatureName, wlsxTrapSnr, wlsxTrapAPMacAddress, wlsxTrapAPRadioNumber, wlsxTrapAPLocation, wlsxTrapAPChannel
Max-Access	
Status	current
Description	This trap indicates that an AP detected a signature match for Null-Probe-Response in a frame. For more info check: <a href="http://www.wve.org/entries/show/WVE-2006-0064">http://www.wve.org/entries/show/WVE-2006-0064</a>

## wlsxNSignatureMatchDeathBcast

Objects	wlsxTrapTime, wlsxTrapTargetAPBSSID, wlsxTrapTransmitterMac, wlsxTrapReceiverMac, wlsxTrapSignatureName, wlsxTrapSnr, wlsxTrapAPMacAddress, wlsxTrapAPRadioNumber, wlsxTrapAPLocation, wlsxTrapAPChannel
Status	current
Description	This trap indicates that an AP detected a signature match for Death-Broadcast in a frame. For more info check: <a href="http://www.wve.org/entries/show/WVE-2005-0019">http://www.wve.org/entries/show/WVE-2005-0019</a> <a href="http://www.wve.org/entries/show/WVE-2005-0045">http://www.wve.org/entries/show/WVE-2005-0045</a>

## wlsxNSignatureMatchDisassocBcast

Objects	wlsxTrapTime, wlsxTrapTargetAPBSSID, wlsxTrapTransmitterMac, wlsxTrapReceiverMac, wlsxTrapSignatureName, wlsxTrapSnr, wlsxTrapAPMacAddress, wlsxTrapAPRadioNumber, wlsxTrapAPLocation, wlsxTrapAPChannel
Status	current
Description	This trap indicates that an AP detected a signature match for Disassoc-Broadcast in a frame. For more info check: <a href="http://www.wve.org/entries/show/WVE-2005-0019">http://www.wve.org/entries/show/WVE-2005-0019</a> <a href="http://www.wve.org/entries/show/WVE-2005-0046">http://www.wve.org/entries/show/WVE-2005-0046</a>

## wlsxNSignatureMatchWellenreiter

Objects	wlsxTrapTime, wlsxTrapTargetAPBSSID, wlsxTrapTransmitterMac, wlsxTrapReceiverMac, wlsxTrapSignatureName, wlsxTrapSnr, wlsxTrapAPMacAddress, wlsxTrapAPRadioNumber, wlsxTrapAPLocation, wlsxTrapAPChannel
Status	current
Description	This trap indicates that an AP detected a signature match for Wellenreiter in a frame. For more info check: <a href="http://www.wve.org/entries/show/WVE-2006-0058">http://www.wve.org/entries/show/WVE-2006-0058</a>

## wlsxAPDeauthContainment

Objects	wlsxTrapTime, wlsxTrapTargetAPBSSID, wlsxTrapNodeMac, wlsxTrapAPChannel, wlsxTrapAPMacAddress, wlsxTrapAPRadioNumber, wlsxTrapAPLocation
Status	current
Description	This trap indicates that an AP has attempted to contain an access point by disconnecting its client.

## wlsxClientDeauthContainment

Objects	wlsxTrapTime, wlsxTrapNodeMac, wlsxTrapTargetAPBSSID, wlsxTrapAPChannel, wlsxTrapAPMacAddress, wlsxTrapAPRadioNumber, wlsxTrapAPLocation
Status	current
Description	This trap indicates that an AP has attempted to contain a client by disconnecting it from the AP that it is associated with.

## wlsxAPWiredContainment

Objects	wlsxTrapTime, wlsxTrapTargetAPBSSID, wlsxTrapNodeMac, wlsxTrapDeviceIpAddress, wlsxTrapDeviceMac, wlsxTrapAPMacAddress, wlsxTrapAPRadioNumber, wlsxTrapAPLocation
Status	current
Description	This trap indicates that an AP has attempted to contain an access point by disrupting traffic to its client on the wired interface.

## wlsxClientWiredContainment

Objects	wlsxTrapTime, wlsxTrapNodeMac, wlsxTrapTargetAPBSSID, wlsxTrapDeviceIpAddress, wlsxTrapDeviceMac, wlsxTrapAPMacAddress, wlsxTrapAPRadioNumber, wlsxTrapAPLocation
Status	current
Description	This trap indicates that an AP has attempted to contain a client by disrupting traffic to it on the wired interface.

## wlsxAPTaggedWiredContainment

Objects	wlsxTrapTime, wlsxTrapTargetAPBSSID, wlsxTrapNodeMac, wlsxTrapDeviceIpAddress, wlsxTrapDeviceMac, wlsxTrapVlanId, wlsxTrapAPMacAddress, wlsxTrapAPRadioNumber, wlsxTrapAPLocation
Status	current
Description	This trap indicates that an AP has attempted to contain an access point by disrupting traffic to its client on the wired interface.

## wlsxClientTaggedWiredContainment

Objects	wlsxTrapTime, wlsxTrapNodeMac, wlsxTrapTargetAPBSSID, wlsxTrapDeviceIpAddress, wlsxTrapDeviceMac, wlsxTrapVlanId, wlsxTrapAPMacAddress, wlsxTrapAPRadioNumber, wlsxTrapAPLocation
Status	current
Description	This trap indicates that an AP has attempted to contain a client by disrupting traffic to it on the wired interface.

## wlsxTarpitContainment

Objects	wlsxTrapTime, wlsxTrapTargetAPBSSID, wlsxTrapNodeMac, wlsxTrapAPChannel, wlsxTrapTargetAPChannel, wlsxTrapSourceMac, wlsxTrapAPMacAddress, wlsxTrapAPRadioNumber, wlsxTrapAPLocation
Status	current
Description	This trap indicates that an AP has attempted to contain an access point by moving a client that is attempting to associate to it to a tarpit.

## wlsxAPChannelChange

Objects	wlsxTrapTime, wlsxTrapAPChannel, wlsxTrapAPChannelSec, wlsxTrapAPPrevChannel, wlsxTrapAPPrevChannelSec, wlsxTrapAPMacAddress, wlsxTrapAPRadioNumber, wlsxTrapAPLocation, wlsxTrapAPARMChangeReason
Status	current
Description	This trap indicates that an AP changed its channel.



## wlsxAPPowerChange

Objects	wlsxTrapTime, wlsxTrapAPTxFPower, wlsxTrapAPPrevTxPower, wlsxTrapAPMacAddress, wlsxTrapAPRadioNumber, wlsxTrapAPLocation
Status	current
Description	This trap indicates that an AP changed its transmit power level.

## wlsxAPModeChange

Objects	wlsxTrapTime, wlsxTrapAPCurMode, wlsxTrapAPPrevMode, wlsxTrapAPMacAddress, wlsxTrapAPRadioNumber, wlsxTrapAPLocation
Status	current
Description	This trap indicates that an AP changed its mode from AP to APMonitor or vice versa.

## wlsxUserEntryAttributesChanged

Objects	wlsxTrapTime, wlsxTrapUserIpAddress, wlsxTrapUserPhyAddress, wlsxTrapAPBSSID, wlsxTrapAPName, wlsxTrapCardSlot, wlsxTrapPortNumber, wlsxTrapUserAttributeChangeType
Status	current
Description	This trap indicates that the user entry attributes have changed.

## wlsxPowerSaveDosAttack

Objects	wlsxTrapTime, wlsxTrapTargetAPBSSID, wlsxTrapTargetAPSSID, wlsxTrapNodeMac, wlsxTrapSnr, wlsxTrapAPMacAddress, wlsxTrapAPRadioNumber, wlsxTrapAPLocation, wlsxTrapAPChannel
Status	current
Description	This trap indicates that an AP detected a Power Save DoS attack.

## wlsxNAPMasterStatusChange

Objects	wlsxTrapTime, wlsxTrapAPMacAddress, wlsxTrapApControllerIp, wlsxTrapApMasterStatus
Status	current
Description	This trap indicates that the status of the AP as seen by the master controller has changed.

## wlsxNAdhocUsingValidSSID

Objects	wlsxTrapTime, wlsxTrapTargetAPBSSID, wlsxTrapTargetAPSSID, wlsxTrapSourceMac, wlsxTrapSnr, wlsxTrapAPMacAddress, wlsxTrapAPRadioNumber, wlsxTrapAPLocation, wlsxTrapAPChannel
Status	current
Description	This trap indicates that an AP detected an ad hoc network node using a valid/protected SSID. For more info check: <a href="http://www.wve.org/entries/show/WVE-2005-0008">http://www.wve.org/entries/show/WVE-2005-0008</a>

## **wlsxMgmtUserAuthenticationFailed**

Objects	wlsxTrapTime, wlsxTrapUserName, wlsxTrapUserIpAddress, wlsxTrapAuthServerName
Status	current
Description	This trap indicates that a management user authentication has failed.

## A

Agents 10

## D

Description 11

## E

Entry 16

## G

group 16

## H

History

ArubaOS 3.1

lsxVoiceCurrentNumCdr 56

wlsxTrapConfidenceLevel 55

wlsxTrapConfigurationId 54

wlsxTrapConfigurationState 54

wlsxTrapCTSTransferType 54

wlsxTrapCTSURL 54

wlsxTrapGlobalConfigObj 55

wlsxTrapLicenseId 55

wlsxTrapMissingLicenses 55

wlsxTrapTableEntryChangeType 55

wlsxTrapTableGenNumber 55

wlsxTrapTunnelId 56

wlsxTrapTunnelStatus 56

wlsxTrapTunnelUpReason 56

wlsxTrapUpdateFailedObj 54

wlsxTrapUpdateFailureReason 54

ArubaOS 3.4

wlsxTrapAPSerialNumber 56

wlsxTraptimeStr 57

ArubaOS 3.4.1

wlsxTrapBackupControllerIp 58

wlsxTrapMasterIp 57

wlsxTrapMasterName 57

wlsxTrapPrimaryControllerIp 57

## M

Managers 10

Max-Access 11

MIB files 13

MIB objects 16

## P

pLocalName 57

## S

Sequence 11

Status 11

Syntax 11

## T

Traps

MIB hierarchy 39

## X

xTrapLocalIp 57

